

# LSV2-10-34-T

4-Way,3-Position,  
Spool-type Solenoid Valve

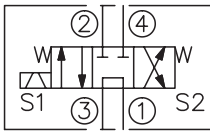
## DESCRIPTION

A solenoid operated, 4-way, 3-position, tandem center, spool-type cartridge valve.

## OPERATION

When de-energized, the valve allows flow from ③ to ① while blocking ② and ④ .  
When coil S1 is energized, the valve allows flow from ④ to ① and from ③ to ② ;  
When coil S2 is energized, the valve allows flow from ② to ① and from ③ to ④ .

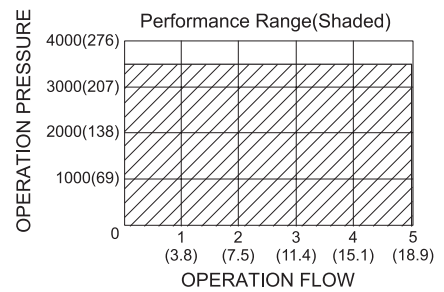
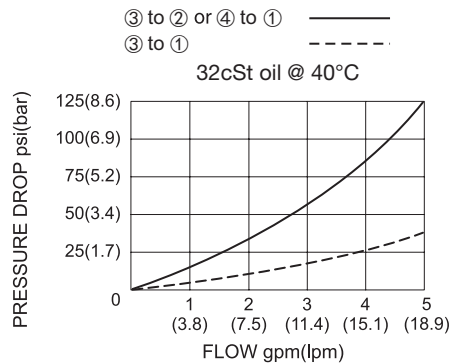
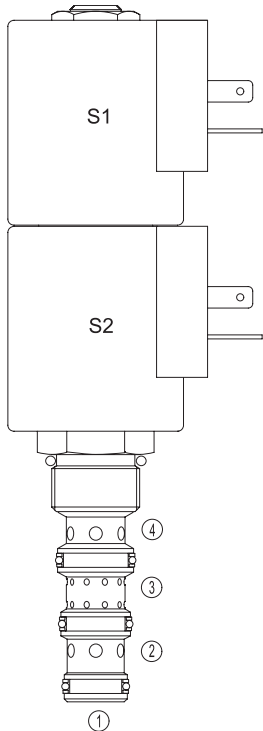
## SYMBOL



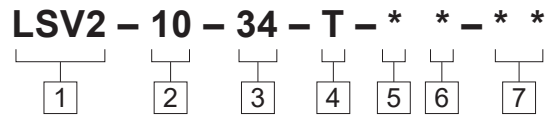
## SPECIFICATIONS

|                    |  |
|--------------------|--|
| Operating Pressure | 207bar   |
| Flow               | See PERFORMANCE CHARACTERISTIC graph.  |
| Internal Leakage   | 164cc/min max.   |
| Temperature        | -40°F to +212°F(-40°C to +100°C)   |
| Coil Duty Rating   | Continuous from 85% to 115% of nominal voltage                               |
| Filtration         | See page N-1   |
| Fluids             | Mineral-based fluids with viscosities of 7.4 to 420 cSt.                     |
| Cavity             | 10-4, See page M-2   |
| Housing Material   | 6061-T6 aluminum alloy rated to 207bar, Steel & Ductile iron rated to 350bar |

## PRESSURE DROP VS.FLOW



**TO ORDER**



- 1 Function**  
LSV2=Solenoid Valve

---

- 2 Size**  
10=10 Size

---

- 3 Flow Path**  
34=4-Way

---

- 4 Style**  
T=Tandem Center

- 5 Coil Voltage**  
1=12 VDC  
2=24 VDC  
3=110 VAC  
4=220 VAC  
5=10 VDC

---

- 6 Coil Connector Type**  
D= Double Lead  
H= Hirschmann  
C= Conduit  
ER= Deutsch Connector(Water-proof Coil)  
B= Double Spade

- 7 Port Size**  
Omit=None  
6T=SAE 6  
8T=SAE 8  
2G=G 1/4  
3G=G 3/8

---

- ※ See page K-6 for detail of housing
- ※ Other port sizes are available

**INSTALLATION DIMENSIONS**

Coil Must Be Installed With Letter Up

Unit=Millimeters

