

LHP-16

Hand Pump

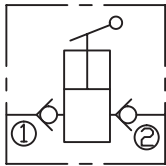
DESCRIPTION

Hand Pump

OPERATION

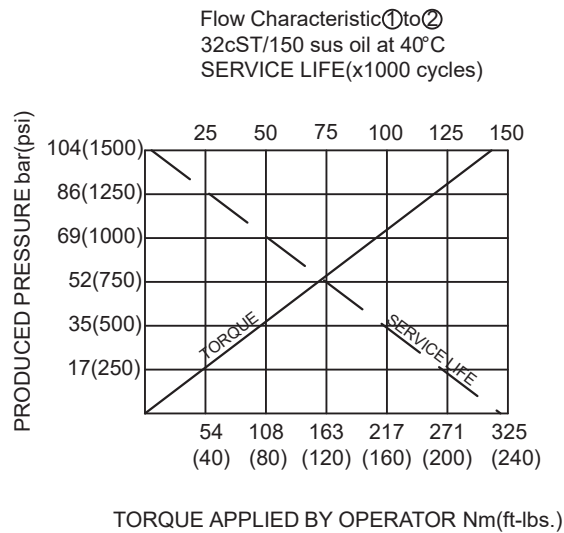
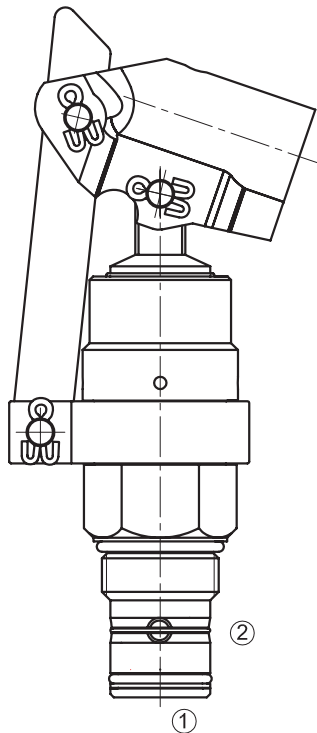
The hand pump provides hydraulic flow to 21.3 cc, per stroke, at pressure to 96 bar.

SYMBOL



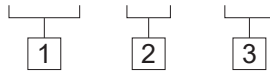
SPECIFICATIONS

System Pressure	207bar
Pressure Generated by LHP-16	96bar Max.
Displacement	21.3cc. per stroke
Internal Leakage	From port ② to the inside of the pump: 5 drops/min max. at 207 bar
Temperature	-40°F to +250°F (-40°C to +120°C)
Filtration	See page N-1
Fluids	Mineral-based fluids with viscosities of 7.4 to 420 cSt.
Cavity	16-2, See page M-3
Housing Material	6061-T6 aluminum alloy rated to 207bar, Steel & Ductile iron rated to 350bar



TO ORDER

LHP - 16 - * *



1 Function
LHP=Hand Pump

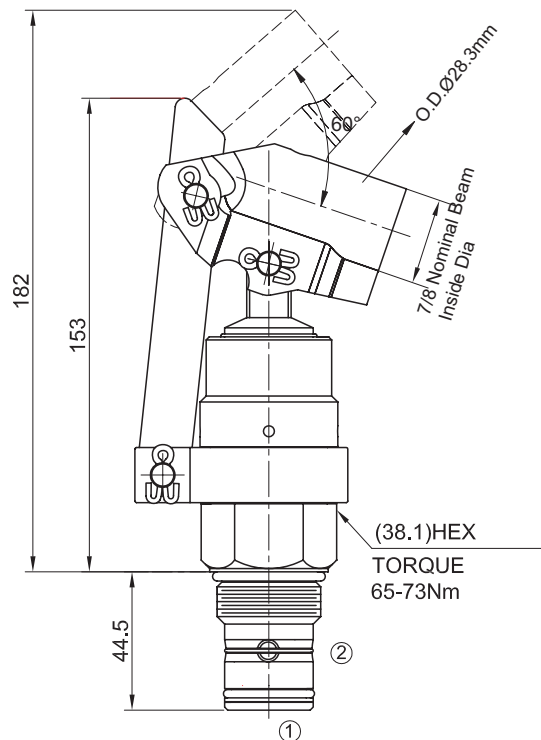
2 Size
16=16-2 Size

3 Port Size
Omit=None
16T=SAE16
8G=G 1

※See page K-9 for detail of housing
※Other port sizes are available

INSTALLATION DIMENSIONS

Unit=Millimeters



J