

LPD2C-10-4

Piloted 3-Way Spool
Directional Valve

DESCRIPTION

A cartridge-style, 2-position, 3-way, pilot-operated, spool-type, Atmospheric Vent directional valve

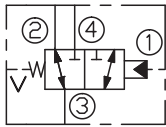
OPERATION

In neutral position (unpiloted), the valve allows flow from port ③ to ② bidirectionally, while port ④ is blocked. The spring chamber is vented to atmosphere, which is internally O-ring sealed from the cartridge flow paths.

On remote pilot signal at port ①, the valve's spool shifts to open port ③ to ④, while port ② is blocked.

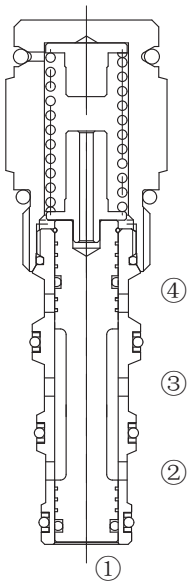
Because of the vented spring chamber, the cartridge may be fully pressurized at any port without affecting required pilot pressure.

SYMBOL

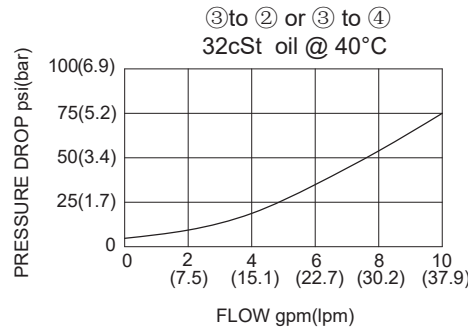


SPECIFICATIONS

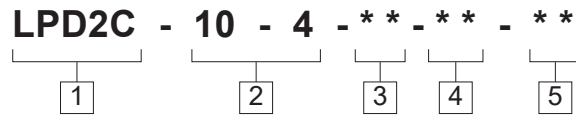
Max. Operating Pressure	250bar
Flow	See PRESSURE DROP VS.FLOW graph.
Internal Leakage	82cc/min max. at 250bar
Pilot Pressure Required	To Full Spool Shift for 4.1bar spring 4.7bar for 7.6bar spring 8.6bar
Temperature	-40°F to +250°F (-40°C to +120°C)
Filtration	See Page N-1
Fluids	Mineral-based fluids with viscosities of 7.4 to 420 cSt.
Cavity	10-4, See page M-2
Housing Material	6061-T6 aluminum alloy rated to 207bar, Steel & Ductile iron rated to 350bar



PRESSURE DROP VS.FLOW



TO ORDER



1 Function
LPD2C= Piloted Three-way Spool
Directional Valve

2 Size
10-4=10-4 Size

3 Bias Spring
4=40psi(2.8bar)
6=60psi(4.1bar)
8=80psi(5.5bar)
11=110psi(7.6bar)

4 Seal Kits
N= Buna N(Std)
NS= Buna N with sealed piston
110psi(7.6bar)minumun spring
V= V-Fluorocarbon
VS= Fluorocarbon with sealed piston
110psi(7.6bar)minumun spring

5 Port Size
Omit= None
6T=SAE6
8T=SAE8
2G=G 1/4
3G=G 3/8

※See page K-6 for detail of housing
※Other port sizes are available

D

INSTALLATION DIMENSIONS

Unit=Millimeters

