

LPFR-10-3F

Non-adjustable Pressure-compensated Flow Control Valve

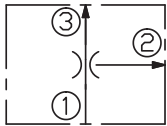
DESCRIPTION

A cartridge-style non-adjustable pressure-compensated flow control valve

OPERATION

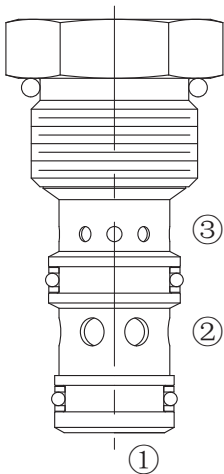
The valve maintains a constant flow rate from ③ regardless of load pressure changes in the system downstream of ③, or in the bypass leg at ②. The valve will pressure compensate once a minimum pressure drop (determined by the fixed spring setting) is achieved from ① to ③. Bypass port ② may be fully pressurized. Flow out of priority port ③ may vary based on input flow amount, particularly with lower temperatures and increased fluid viscosities.

SYMBOL



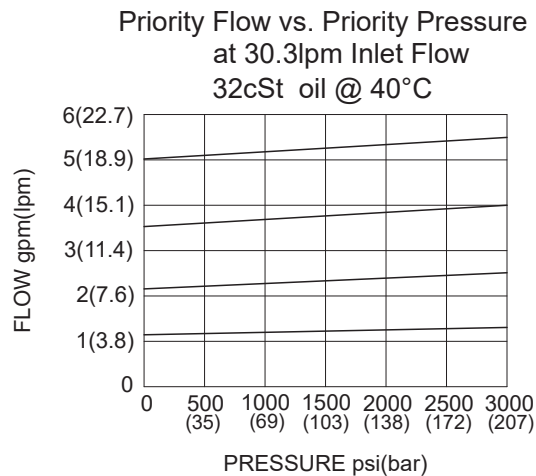
SPECIFICATIONS

Max. Operating Pressure	207bar
MAX. Input Flow Rate	38lpm.
Flow Setting	1 - 19lpm
Temperature	-40°F to +250°F (-40°C to +120°C)
Filtration	See Page N-1
Fluids	Mineral-based fluids with viscosities of 7.4 to 420 cSt.
Cavity	10-3, See page M-2
Housing Material	6061-T6 aluminum alloy rated to 207bar, Steel & Ductile iron rated to 350bar

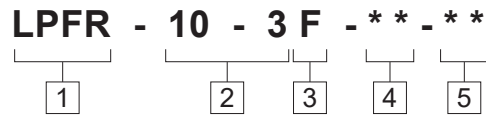


If flow to port ③ is shut off, flow to port ② will be shut off

PRESSURE DROP VS. FLOW



TO ORDER



1 Function
 LPRF=Not-adjustable,
 Non-adjustable Pressure-compensated
 Flow Control Valve

2 Size
 10-3=10-3 Size

3 Adjustment
 F=Not-adjustable

4 Optional Flow Setting
 M2.8= 2.8lpm

5 Port Size
 Omit= None
 6T=SAE6
 8T=SAE8
 2G=G 1/4
 3G=G 3/8

※ See page K-5 for detail of housing
 ※ Other port sizes are available

F

INSTALLATION DIMENSIONS

Unit=Millimeters

