

LPOC1-12-3S

Pilot-to-open Check Valve

DESCRIPTION

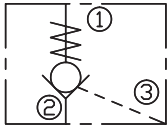
A cartridge-style Pilot to open, poppet-type check valve

OPERATION

The valve allows flow from ② to ①, while normally blocking flow from ① to ②. Flow will be allowed from ① to ② when sufficient pressure is applied at ③.

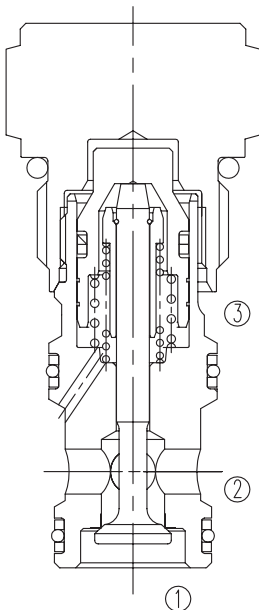
The cartridge has a 3:1 pilot ratio, meaning that at least one-third of the load pressure held at ① is required at ③ to open the valve.

SYMBOL

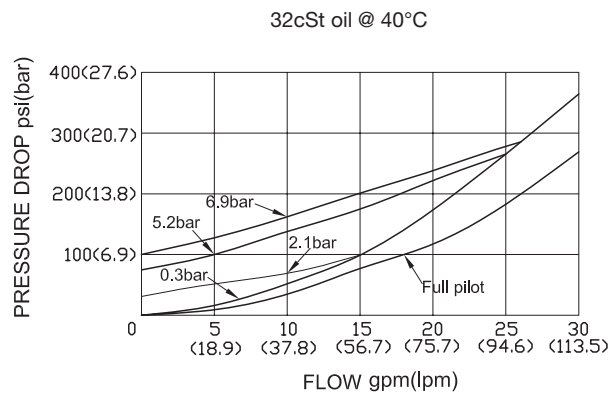


SPECIFICATIONS

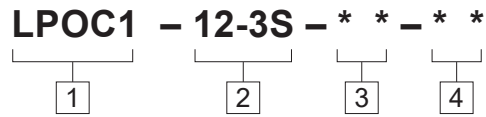
Operating Pressure	350bar
Flow	See PRESSURE DROP VS.FLOW graph.
Internal Leakage	5 drops/min max. at 350bar.
Cracking Pressure	0.3=0.3bar 2.0=2.0bar 5.1=5.1bar 6.9=6.9bar
Pilot Ratio	3:1
Temperature	-40°F to +250°F(-40°C to +120°C)
Filtration	See page N-1
Fluids	Mineral-based fluids with viscosities of 7.4 to 420 cSt.
Cavity	12-3S, See page M-25
Housing Material	Steel & Ductile iron rated to 350bar



PRESSURE DROP VS.FLOW



TO ORDER



1 Function
LPOC1=Pilot to Open Check Valve

2 Size
12-3S=12-3S Size

3 Cracking Pressure
0.3=0.3bar
2.0=2.0bar
5.1=5.1bar
6.9=6.9bar

4 Port Size
Omit=None
10T=SAE10
12T=SAE12

※Other port sizes are available

D

INSTALLATION DIMENSIONS

Unit=Millimeters

