

LPOSRV2-10

Pilot-operated Relief Valve With Reverse Free Flow Check

DESCRIPTION

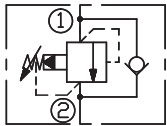
A cartridge-style pilot-operated poppet -type relief valve with reverse free flow check

OPERATION

The valve prevents flow from ① to ② until pressure at ① exceeds the set Cracking Pressure and opens the pilot section. The pilot flow creates a pressure differential across the poppet which causes the valve to open allowing flow from ① to ② protecting the circuit from over pressurization.

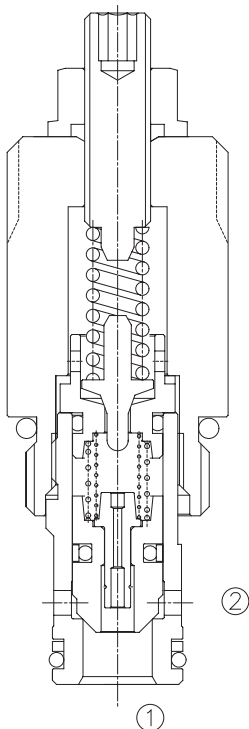
Pressure at ② overcomes the spring-bias pressure 2 ~ 3bar and allows free flow from ② to ①, then in its steady state, pressure maintains at 1.4 bar.

SYMBOL

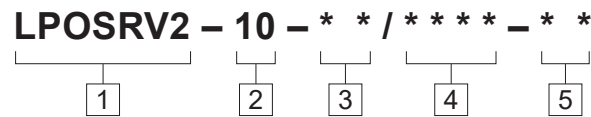


SPECIFICATIONS

Max.Operating Pressure	350bar
Flow	100 L/min.
Internal Leakage	10 drops/min max. to 80% of nominal setting
Temperature	-40°F to +250°F(-40°C to +120°C)
Filtration	See page N-1
Fluids	Mineral-based fluids with viscosities of 7.4 to 420 cSt.
Cavity	10-2, See page M-2
Housing Material	Steel & Ductile iron rated to 350bar



TO ORDER



1 Function
LPOSRV2=Adjustable Pilot-operated Cartridge Relief Valve

2 Size
10=10 Size

3 Spring Ranges
20=500-2000psi(35-140bar)
Preset:695psi(48bar)
40=1000-4000psi(70-280bar)
Preset:1275psi(88bar)
60=2000-6000psi(140-420bar)
Preset:2030psi(140bar)

4 Optional Pressure Setting
Omit=Standard Setting
Example:0250=250Bar

5 Port Size
Omit=None
6T=SAE 6
8T=SAE 8
3G=G 3/8
4G=G 1/2

※See page K-4 for detail of housing
※Other port sizes are available

INSTALLATION DIMENSIONS

Unit=Millimeters

