

LSPC-08-4

Pual pilot check valve with Solenoid Valve

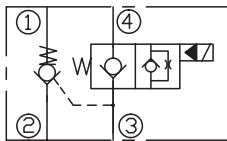
DESCRIPTION

A dual pilot operated check valve with solenoid valve

OPERATION

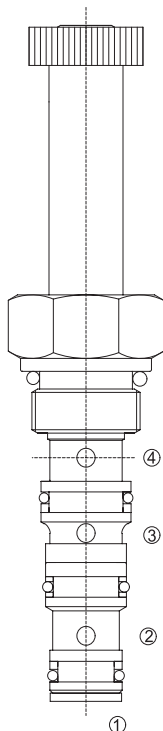
The valve will block from ① to ② , ④ to ③ . Flow is allowed in the direction, when pressure is applied to port ② and/or port ③ . The valve has a 2.5:1 pilot ratio, so at least 1/2.5 of the load pressure at ① is required at port ③ or ④ (when energized, the valve allows flow from ④ to ③),to open the flow passage to allow flow from ① to ② .

SYMBOL

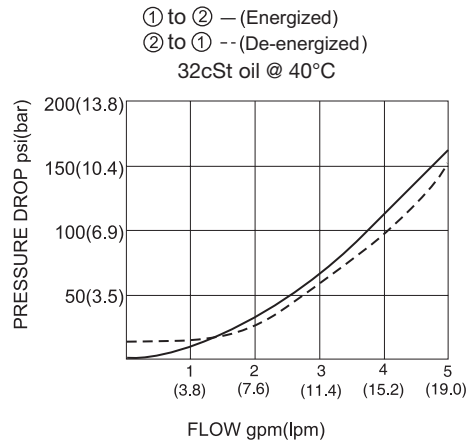


SPECIFICATIONS

Operating Pressure	207bar
Flow	See PERFORMANCE CHARACTERISTIC graph.
Internal Leakage	2drops/min.
Temperature	-40°F to +212°F(-40°C to +100°C)
Coil Duty Rating	Continuous from 85% to 115% of nominal voltage
Filtration	See page N-1
Fluids	Mineral-based fluids with viscosities of 7.4 to 420 cSt.
Cavity	08-4, See page M-1
Housing Material	6061-T6 aluminum alloy rated to 207bar, Steel & Ductile iron rated to 350bar

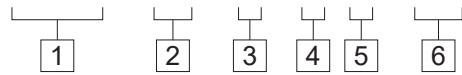


PRESSURE DROP VS.FLOW



TO ORDER

LSPC - 08 - 4 - * * - * *



- 1 Function**
LSPC=Solenoid Valve

- 2 Size**
08=08 Size

- 3 Flow Path**
4=4-Way

- 4 Coil Voltage**
1=12 VDC
2=24 VDC
3=110 VAC
4=220 VAC
5=10 VDC
7=48 VDC
8=24 VAC

- 5 Coil Connector Type**
D= Double Lead
S= Single Lead
H= Hirschmann
ER= Deutsch Connector(Water-proof Coil)

- 6 Port Size**
Omit=None
4T=SAE 4
6T=SAE 6
2G=G 1/4
3G=G 3/8

※ See page K-3 for detail of housing
 ※ Other port sizes are available

INSTALLATION DIMENSIONS

Coil Must Be Installed With Letter Up

Unit=Millimeters

