

LSQDB

Kick-down Pilot-operated Sequence Valve

DESCRIPTION

A cartridge-style kick-down pilot-operated spool-type sequence valve with internal pilot and spring chamber drain

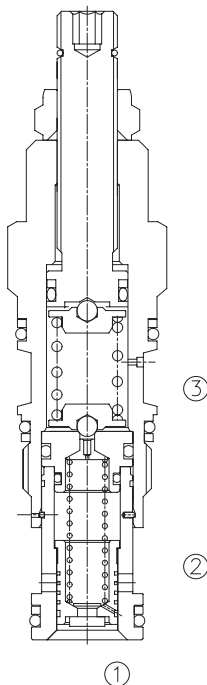
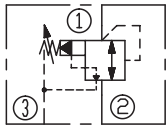
OPERATION

Kick-down sequence valves will kick completely open and remain open once the pressure at the inlet(port ①)exceeds the valve setting, creating an unrestricted flow path from ① to ② (sequence). The pressure setting at port ① is relative to the drain (port ③). The valve remains open as long as the pressure at port ① exceeds the pressure at port ② . To reset the valve, pressure at port ① must fall below the setting of the valve, flow from ① to ② must cease; pressure at port ② must be equal to or greater than the pressure at port ①.

FEATURES

- Should not be used in load holding applications.
- The main stage orifice is protected by a 150 micron stainless steel screen.
- Pressure at port ③ is directly additive to the valve setting at a 1:1 ratio and should not exceed 5000 psi (350 bar).
- Intended for use on the actuator side of the system as flow through the valve must cease for the valve to reset. If used on the pump side of a system, pump flow must be shut off for the valve to reset.

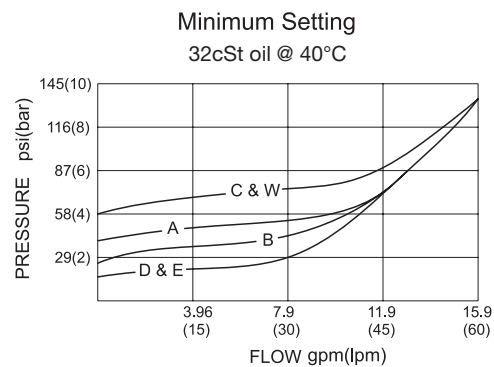
SYMBOL



SPECIFICATIONS

Max.Operating Pressure	350 bar
Capacity	See PRESSURE DROP VS. FLOW graph.
Internal Leakage	33 cc/min.@70bar
Temperature	-40°F to +250°F(-40°C to +120°C)
Filtration	See page N-1
Fluids	Mineral-based fluids with viscosities of 7.4 to 420 cSt.
Cavity	SUN T-11A, See page M-6
Housing Material	Steel & Ductile iron rated to 350bar

PRESSURE DROP VS.FLOW



TO ORDER

LSQ * B - * * * - * *

1
2
3
4
5
6

1 Function
 LSQ=Kick-down Pilot-operated
 Spool-type Sequence Valve

2 Capacity
 D=60L/min

3 Control
 L=Standard Screw Adjustment

4 Spring Ranges
 A=100-3000psi(7-210bar)
 Preset:1000psi(70bar)
 B=50-1500psi(3.5-105bar)
 Preset:1000psi(70bar)
 C=150-6000psi(10.5-420bar)
 Preset:1000psi(70bar)
 D=25-800psi(1.7-55bar)
 Preset:400psi(28bar)
 E=25-400psi(1.7-28bar)
 Preset:200psi(14bar)
 W=150-4500psi(10.5-315bar)
 Preset:1000psi(70bar)
 Factory Pressure setting established at 15L/min;

5 Seal Kits
 N=Buna N
 V=Viton

6 Port Size
 Omit=None
 6T=SAE6
 8T=SAE8
 3G=G 3/8
 4G=G 1/2

※See page K-17 – K-22 for
 detail of housing
 ※Other port sizes are available

E

INSTALLATION DIMENSIONS

Unit=Millimeters

