

# LHS5-10-43

Hot Oil Shuttle Valve

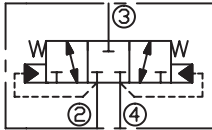
## DESCRIPTION

A cartridge-style, spring centered spool, closed center, 3-position, 3-way hot oil shuttle valve

## OPERATION

Low-side (hot oil) shuttle cartridges allow hot oil to be diverted from the low pressure side of a closed loop system. When both work ports (ports ② and ④) are at equal pressures the valve is spring-centered to an all-ports-blocked position. When one of the work ports (port ② or ④) sees a higher pressure the opposite work port is connected to the common port (port ③).

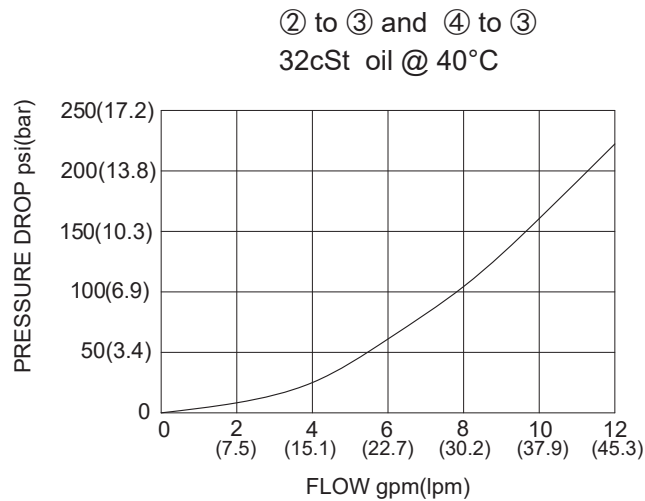
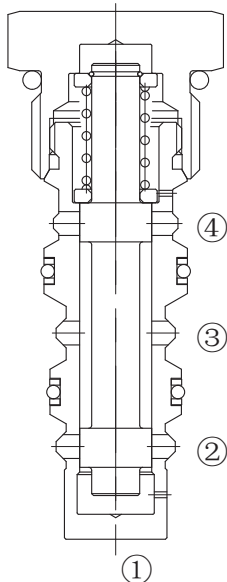
## SYMBOL



## SPECIFICATIONS

Max.Operating Pressure	350bar
Flow	See PRESSURE DROP VS.FLOW graph.
Temperature	-40°F to +250°F(-40°C to +120°C)
Filtration	See Page N-1
Fluids	Mineral-based fluids with viscosities of 7.4 to 420 cSt.
Cavity	10-4,See page M-2
Housing Material	6061-T6 aluminum alloy rated to 207bar, Steel & Ductile iron rated to 350bar

## PRESSURE DROP VS.FLOW



**TO ORDER**

**LHS5 - 10 - 43 - \* \* - \* \***

┌───┐
┌───┐
┌───┐
┌───┐  
1
2
3
4

**1 Function**  
LHS5= Hot Oil Shuttle Valve

**2 Size**  
10=10 Size

**3 Compensator Spring**  
60=60psi(4.1bar)

**4 Port Size**  
Omit= None  
6T=SAE6  
8T=SAE8  
2G=G 1/4  
3G=G 3/8

※See page K-7 for detail of housing  
※Other port sizes are available

D

**INSTALLATION DIMENSIONS**

Unit=Millimeters

