

LDPC5-08

Dual Pilot-operated Check Valve

DESCRIPTION

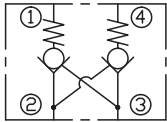
A cartridge-style dual pilot-operated check valve

OPERATION

The valve will block flow from ① to ②, and from ④ to ③. Flow is allowed in the opposite direction when pressure is applied to port ② and/or port ③.

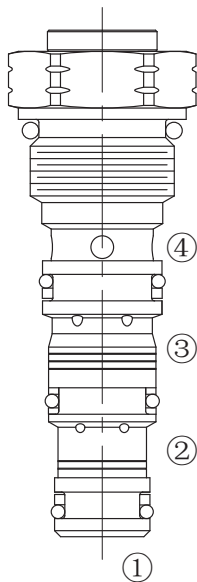
The valve has a 4.5:1 pilot ratio, so at least 1/4.5 of the load pressure at port ① or ④ is required at the pilot lines (port ③ or ②) to open the flow passage to allow flow from port ① or ④.

SYMBOL

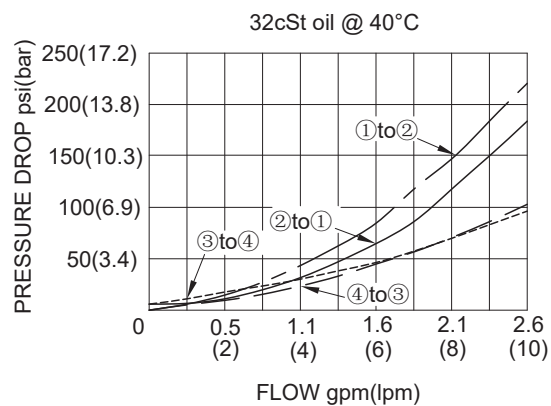


SPECIFICATIONS

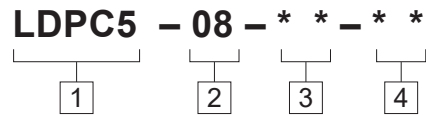
Operating Pressure	207bar
Flow	See PRESSURE DROP VS.FLOW graph.
Check Valve Leakage	2 drops/min.at 207bar
Cracking Pressure	0.4=0.4bar 1.7=1.7bar 3.4=3.4bar
Pilot Ratio	4.5 : 1
Temperature	-40°F to +250°F(-40°C to +120°C)
Filtration	See Page N-1
Fluids	Mineral-based fluids with viscosities of 7.4 to 420 cSt.
Cavity	08-4, See page M-1
Housing Material	6061-T6 aluminum alloy rated to 207bar, Steel & Ductile iron rated to 350bar



PRESSURE DROP VS.FLOW



TO ORDER



1 Function
LDPC5=Dual Pilot-operated
Cartridge Check Valve

3 Cracking Pressure
0.4= 0.4bar
1.7= 1.7bar
3.4= 3.4bar

4 Port Size
Omit= None
4T=SAE4
6T=SAE6
2G=G 1/4
3G=G 3/8

2 Size
08=08 Size

※ See page K-13 for detail of housing
※ Other port sizes are available

D

INSTALLATION DIMENSIONS

Unit=Millimeters

