

LLOFA-8DN

Logic Element

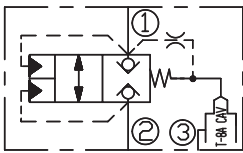
DESCRIPTION

A cartridge-style vent-to-open, spring biased closed, unbalanced poppet logic element with pilot source from port ① and integral T-8A control cavity

OPERATION

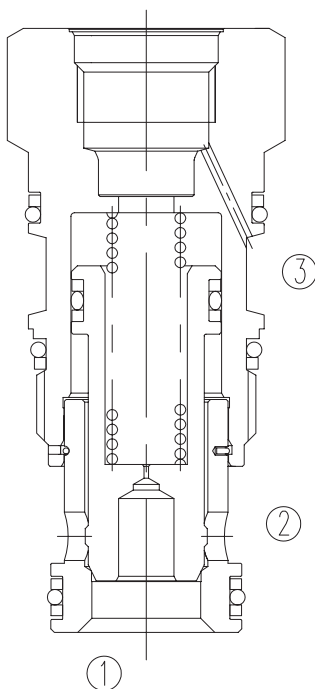
This valve is an unbalanced, vent-to-open, 2-way logic switching element with an integral pilot control cavity. It is spring biased closed and uses port ① as a pilot source. With a pilot 2-way valve in the closed position installed in the T-8A cavity, the logic element will remain in the closed position. With the pilot valve open, the logic element will open providing there is a sufficient combination of pressures to overcome the spring force. The force generated at port ③, plus the spring force, must be greater than the sum of the forces acting at port ① and port ② for the valve to remain closed. NOTE: The pilot area (port ③) is 1.8 times the area at port ① and 2.25 times the area at port ②.

SYMBOL

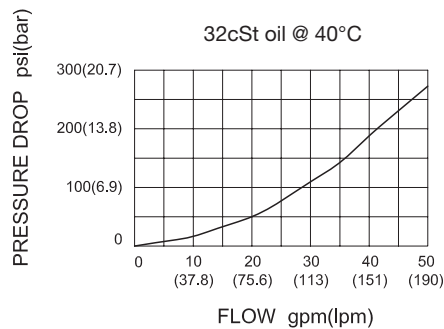


SPECIFICATIONS

Max. Operating Pressure	350bar
Capacity	See PRESSURE DROP VS.FLOW graph.
Temperature	-40°F to +250°F(-40°C to +120°C)
Filtration	See page N-1
Fluids	Mineral-based fluids with viscosities of 7.4 to 420 cSt.
Cavity	SUN T-2A, See page M-6
Housing Material	Steel & Ductile iron rated to 350bar



PRESSURE DROP VS.FLOW



TO ORDER

LLO F A - 8 * * - * *

1
2
3
4
5
6
7

1 Function
LLO=Unbalanced Poppet Logic Element

2 Capacity
F=200L/min

3 Pilot Source
A=From Port ①

4 Control
8=Integral T-8A Control Cavity

5 Cracking Pressure
D=50psi(3.5bar)

6 Seal
N=Buna N
V= Viton

7 Port Size
Omit=None
8T=SAE 8
10T=SAE 10
3G=G 3/8
4G=G 1/2

※ See page K-23—K-24 for detail of housing
※ Other port sizes are available

INSTALLATION DIMENSIONS

Unit=Millimeters

H

