

LDPC-08

Dual Pilot-operated Check Valve

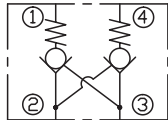
DESCRIPTION

A cartridge-style dual pilot-operated check valve

OPERATION

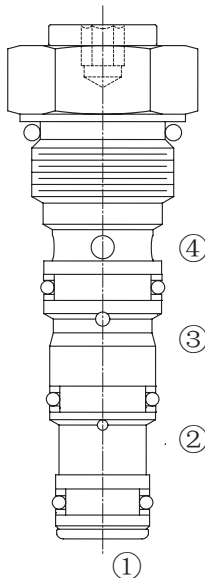
The valve will block flow from ① to ② , and from ④ to ③ . Flow is allowed in the opposite direction when pressure is applied to port ② and/or ③ . The valve has a 2.5:1 pilot ratio, so at least 40 percent of the load pressure at port ① or ④ is required at the pilot lines (port ③ or ②)to open the flow passage to allow flow from port ① or ④ .

SYMBOL

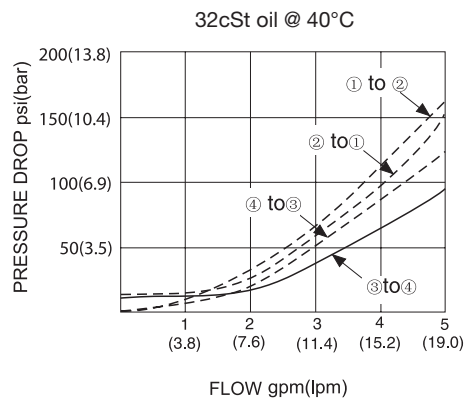


SPECIFICATIONS

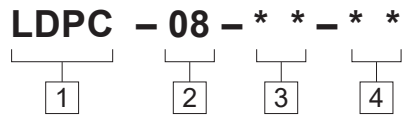
Operating Pressure	207bar
Flow	See PRESSURE DROP VS.FLOW graph.
Check Valve Leakage	2 drops/min. at 207bar
Cracking Pressure	0.4=0.4bar 3.4=3.4bar
Pilot Ratio	2.5:1
Temperature	-40°F to +250°F(-40°C to +120°C)
Filtration	See page N-1
Fluids	Mineral-based fluids with viscosities of 7.4 to 420 cSt.
Cavity	08-4, See page M-1
Housing Material	6061-T6 aluminum alloy rated to 207bar, Steel & Ductile iron rated to 350bar



PRESSURE DROP VS.FLOW



TO ORDER



1 Function
LDPC=Dual Pilot-operated
Cartridge Check Valve

3 Cracking Pressure
0.4=0.4bar
3.4=3.4bar

4 Port Size
Omit=None
4T=SAE4
6T=SAE6
2G=G 1/4
3G=G 3/8

2 Size
08=08 Size

※ See page K-13 for detail of housing
※ Other port sizes are available

D

INSTALLATION DIMENSIONS

Unit=Millimeters

