

# LDPCB

Piloted 2-Way Spool  
Directional Valve

## DESCRIPTION

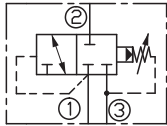
A cartridge-style 2-way pilot-operated spool-type internal-vent directional valve

## OPERATION

Pilot-operated, 2-way, directional cartridges valve, normally closed, the valve shifts when the pressure differential between port ① and port ③ exceeds the setting.

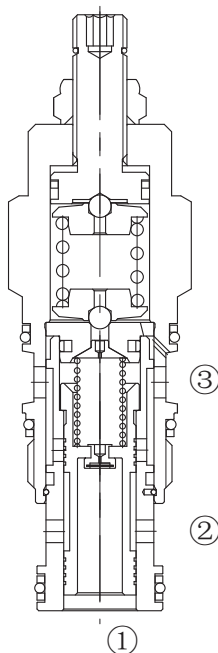
Pressure at port ③ is directly additive to the setting of the valve. Because of this, port ③ may not be useable as a work port in your circuit. Port ③ can be blocked to prevent the valve from shifting and Maximum pressure at port ③ should be limited to 3000 psi (210 bar).

## SYMBOL

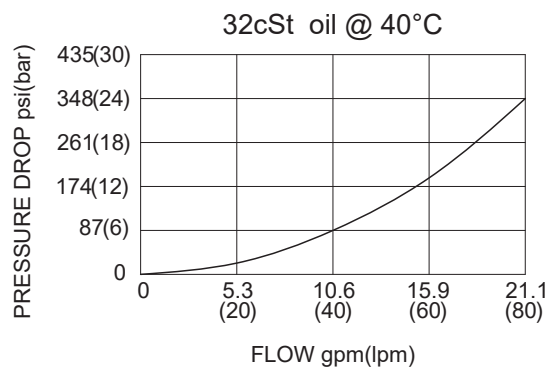


## SPECIFICATIONS

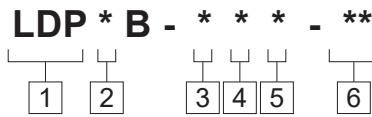
Operating Pressure	350bar
Flow	See PRESSURE DROP VS.FLOW graph.
Internal Leakage	16 cc/min max. at 70 bar
Spring Range	A: 100 - 3000 psi ( 7 – 210 bar), Preset: 1000 psi (70bar) B: 50 - 1500 psi ( 3.5 – 105 bar), Preset: 1000 psi (70bar) D: 25 - 800 psi ( 1.7 – 55 bar), Preset: 400 psi (28bar) E: 25 - 400 psi ( 1.7 – 28 bar), Preset: 200 psi (14bar) W: 150 - 4500 psi (10.5 – 315 bar), Preset: 1000 psi (70bar)
Temperature	-40°F to +250°F(-40°C to +120°C)
Filtration	See Page N-1
Fluids	Mineral-based fluids with viscosities of 7.4 to 420 cSt.
Cavity	SUN T-2A, See page M-6
Housing Material	Steel & Ductile iron rated at 350Bar



## PRESSURE DROP VS.FLOW



**TO ORDER**



- 1 Function**  
LDP= Piloted Two-way Spool Directional Valve

---

- 2 Flow**  
C=60L/min.

---

- 3 Control**  
L=Standard Screw Adjustment

---

- 4 Spring Ranges**  
 A =100-3000psi(7-210bar)    Preset:1000psi(70bar)  
 B =50-1500psi(3.5-105bar)    Preset:1000psi(70bar)  
 D =25-800psi(1.7-55bar)    Preset:400psi(28bar)  
 E =25-400psi(1.7-28bar)    Preset:200psi(14bar)  
 W =150-4500psi(10.5-315bar) Preset:1000psi(70bar)  
 Factory Pressure setting established at 15L/min;

- 5 Seal Kits**  
 N=Buna N  
 V=Viton

- 6 Port Size**  
 Omit= None  
 8T=SAE8  
 10T=SAE10  
 3G=G 3/8  
 4G=G 1/2

※ See page K-23 for detail of housing  
 ※ Other port sizes are available

**INSTALLATION DIMENSIONS**

Unit=Millimeters

