

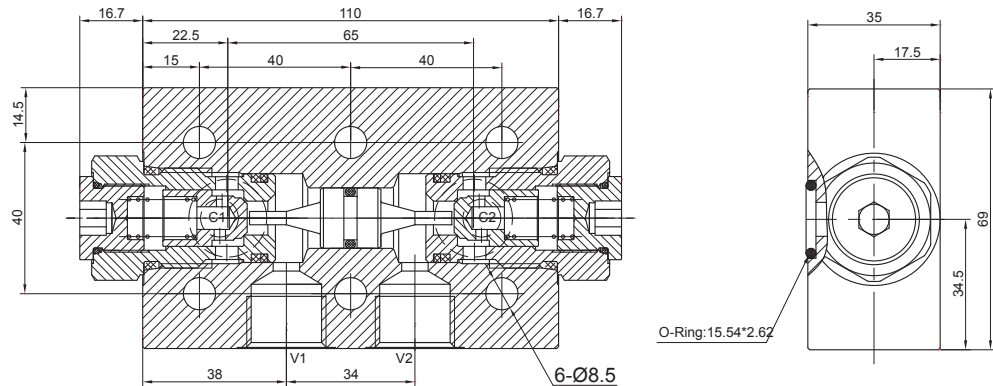
# D-POC6-MMB-6G-10-4G-\*



Dual Pilot-operated Check Valve

## DESCRIPTION

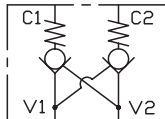
Dual pilot-operated check valve  
inline mounted



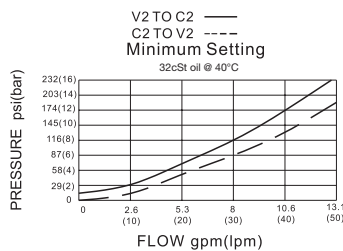
## OPERATION

The valve will block from “C1” to “V1” and from “C2” to “V2”. Flow is allowed in the opposite direction when pressure is applied to port “V1” or “V2”. The valve has a 3.2:1 pilot ratio, so at least 1/3.2 of the load pressure at port “C1” or “C2” is required at the pilot lines (ports “V1” or “V2”) to open the flow passage to allow flow from ports “C1” or “C2”.

## SYMBOL



## PRESSURE DROP VS.FLOW



## SPECIFICATIONS

Operating Pressure	350bar
Flow	See PRESSURE DROP VS.FLOW graph.
Pilot Ratio	3.2:1
Internal Leakage	2 drops/min max. at 350 bar
Cracking Pressure	8=8bar; 1.5=1.5bar
Temperature	-40°F to +250°F (-40°C to +120°C)
Filtration	See page N-1
Fluids	Mineral-based fluids with viscosities of 7.4 to 420 cSt.
Housing Material	Steel & Ductile iron rated to 350bar

## TO ORDER

**D – POC6 – MMB – 6G – 10 – 4G – \***

1

2

3

4

5

6

**1 Function**  
D-POC6=Dual Pilot-operated Check  
Valve Inline Body

**4 Sealing Method of Pilot Piston**  
00=No O-Ring  
10=With O-Ring

**6 Cracking Pressure**  
8=8bar 1.5=1.5bar

**2 ConnectionType**

**5 Port Size**  
4G=G 1/2

※Other port sizes are available

**3 Size**