

LCDK3-2

Direct-acting Pressure Reducing Valve

DESCRIPTION

A cartridge-style, direct-acting ,2-way, ball-type pressure reducing valve.

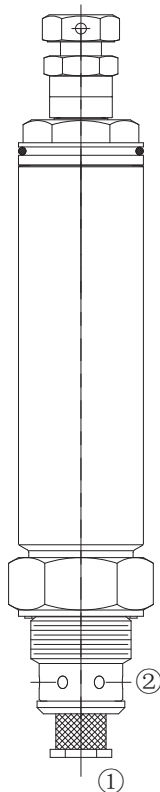
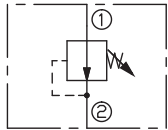
OPERATION

In its steady state, the valve allows flow from ① to ② . The spring chamber is vented to atmosphere. On attainment of a pre-determined pressure at ② ,the cartridge shifts to restrict input flow at ① ,thereby regulating pressure at ② .

ASSEMBLY INFORMATION

1. Before screwing in the valve, loosen the lock nut and sealing nut until the travel stop.
2. Screw in the valve and tighten with the specified torque. The metallic sealing of the inlet to the outlet is formed between the facial sealing edge of the valve and the shoulder of the stepped hole in the basic body.
3. Tighten lock nut and sealing nut with specified torque.

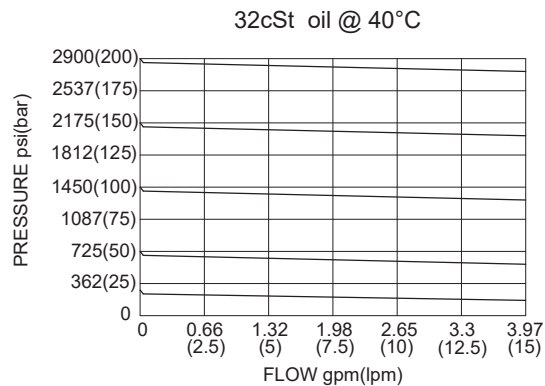
SYMBOL



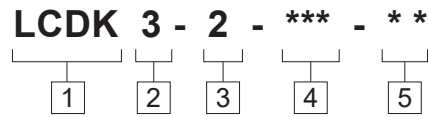
SPECIFICATIONS

Max.Operating Pressure	500bar
Flow	See PRESSURE DROP VS.FLOW graph.
Internal Leakage	<1 drops/min. in closed state
Reseat Pressure	80% of cracking pressure(cracking pressure at 0.95lpm/0.25gpm)
Standard Spring Ranges	15 to 130 bar; preset: 130bar 20 to 200 bar; preset: 200bar 30 to 300 bar; preset: 300bar
Temperature	-40°F to +250°F(-40°C to +120°C)
Filtration	See Page N-1
Fluids	Mineral-based fluids with viscosities of 7.4 to 420 cSt.
Cavity	HAWE CDK3, See page M-30
Housing Material	Steel & Ductile iron rated to 350bar

PRESSURE DROP VS.FLOW



TO ORDER



1 Function
LCDK= Direct-Acting Pressure Reducing Valve

3 Spring Ranges
2=290-2900psi(20-200bar)
Preset:2900psi(200bar)

5 Port Size
Omit= None
6T=SAE6
8T=SAE8
3G=G 3/8

2 Flow
3=12L/min

4 Optional Pressure setting
Omit=Standard Setting
Example:100=100Bar

※Other port sizes are available

E

INSTALLATION DIMENSIONS

Unit=Millimeters

