

LDRBC

Piloted 3-Way Spool
Directional Valve

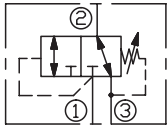
DESCRIPTION

A cartridge-style 3-way direct-acting spool-type directional valve

OPERATION

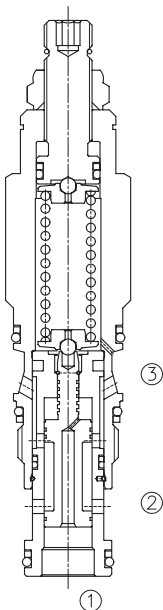
Direct-acting, 3-way directional cartridges (① blocked, ② to ③ open) are switching devices typically used in moderate flow circuits. They can be used by themselves or to actuate larger pilot-operated directional cartridges or logic cartridges. The valve shifts when the pressure differential between port ① and port ③ exceeds the setting. Pressure at port ③ is directly additive to the setting of the valve. Because of this, port ③ may not be useable as a work port in your circuit.

SYMBOL

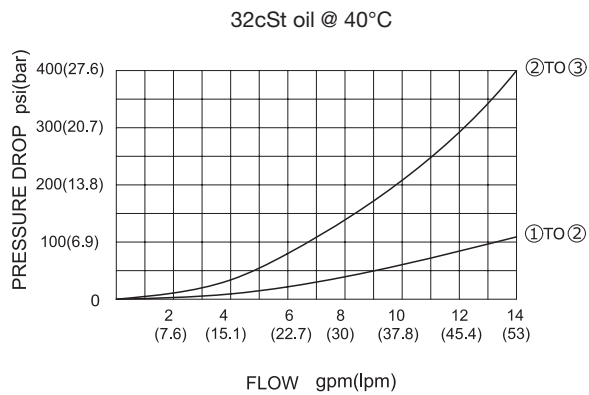


SPECIFICATIONS

Operating Pressure	350bar
Flow	See PRESSURE DROP VS.FLOW graph.
Internal Leakage	30 cc/min. at 70 bar
Cracking Pressure	A: 35 -210 bar, Preset:70 bar B: 3.5 -105 bar, Preset:14 bar D: 1.7 - 55 bar, Preset:14 bar E: 1.7 - 28 bar, Preset:14 bar S: 1.7 - 14 bar, Preset:14 bar W: 50 -315 bar, Preset:70 bar
Temperature	-40°F to +250°F(-40°C to +120°C)
Filtration	See page N-1
Fluids	Mineral-based fluids with viscosities of 7.4 to 420 cSt.
Cavity	SUN T-11A, See page M-6
Housing Material	Steel & Ductile iron rated to 350bar



PRESSURE DROP VS.FLOW



TO ORDER

LDR B C - * * * - * *

1
2

3
4
5

6

1 Function
LDR=Piloted Three-way Spool Directional Valve

2 Flow
B=28L/min.

3 Control
L=Standard Screw Adjustment

4 Spring Ranges

A: 500-3000psi(35-210bar),	Preset:(1000psi)70bar
B 50-1500psi(3.5-105bar),	Preset(200psi)14bar
D: 25-800psi(1.7-55bar),	Preset(200psi)14bar
E: 25-400psi(1.7-28bar),	Preset(200psi)14bar
S: 25-200psi(1.7-14bar).	Preset(200psi)14bar
W: 750-4500psi(50-315bar),	Preset(1000psi)70bar

Factory Pressure setting established at 15L/min;

5 Seal Kits
N=Buna N
V=Viton

6 Port Size
Omit=None
6T=SAE6
8T=SAE8
3G=G 3/8
4G=G 1/2

※ See page K-17 – K22 for detail of housing

※ Other port sizes are available

INSTALLATION DIMENSIONS

Unit=Millimeters

