

LMP-10-L

Manual 2-Way Pull-to-open
Directional Valve

DESCRIPTION

A cartridge-style manual 2-way pull-to-open directional valve

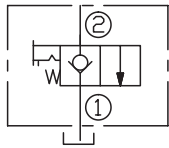
OPERATION

The valve blocks flow from ② to ① flow path until an operator pulls the shaft outward.

Note: Pressure at port ① will directly act on the spool and spring. Port ① is intended to be a tank port only. The bias spring allows for up to 12.4 bar (180 psi) back-pressure at ① before the valve will open. A unique 90° rotational lock is optional for positive “open” position holding.

The valve resets to spring return-to-close with a 90° turn from the locked-open position.

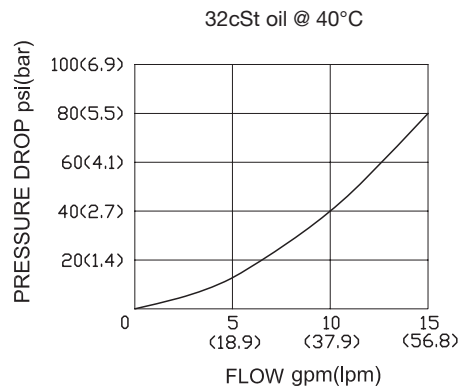
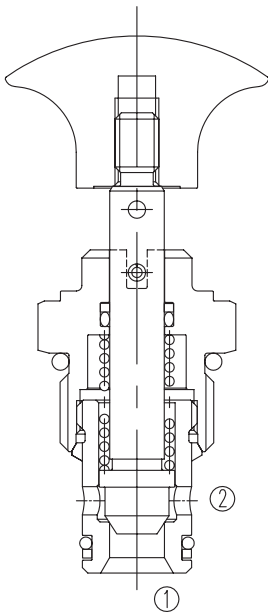
SYMBOL



SPECIFICATIONS

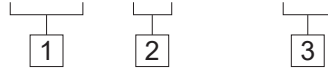
Operating Pressure	207bar
Flow	See PRESSURE DROP VS.FLOW graph.
Internal Leakage	5 drops/min Max. at 207bar.
Temperature	-40°F to +250°F(-40°C to +120°C)
Filtration	See page N-1
Fluids	Mineral-based fluids with viscosities of 7.4 to 420 cSt.
Cavity	10-2, See page M-2
Housing Material	6061-T6 aluminum alloy rated to 207bar, Steel & Ductile iron rated to 350bar

PRESSURE DROP VS.FLOW



TO ORDER

LMP - 10 - L - * *



1 Function

LMP=Manual, Spring
Return, Pull-to-shift

2 Size

10=10 Size

3 Port Size

Omit=None
6T=SAE6
8T=SAE8
2G=G 1/4
3G=G 3/8

※ See page K-4 for detail of housing
※ Other port sizes are available

D

INSTALLATION DIMENSIONS

Unit=Millimeters

