

LFR-12-3C

Adjustable Pressure-compensated
Flow Control Valve

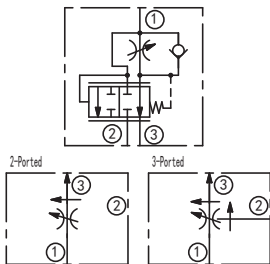
DESCRIPTION

A cartridge-style adjustable pressure-compensated priority type with reverse flow check flow control valve

OPERATION

The valve maintains a constant flow rate from ③ regardless of load pressure changes in the system downstream of ③, or in the bypass leg at ②. Reverse flow (③ to ①) bypasses the control orifice. Bypass port ② may be fully pressurized. The regulated flow increases from closed to fully open, with counter-clockwise rotation of the knob.

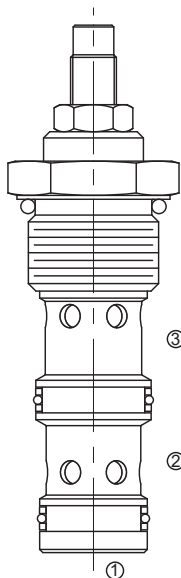
SYMBOL



SPECIFICATIONS

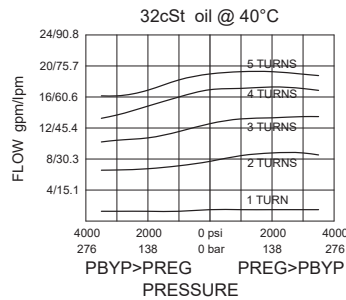
Operating Pressure	240bar
Max. Input Flow	3-ported: 114L/min
Flow Setting	3-ported regulated flow: 0-68 lpm 2-ported regulated flow: 0-45 lpm
Temperature	-40°F to +250°F(-40°C to +120°C)
Filtration	See Page N-1
Fluids	Mineral-based fluids with viscosities of 7.4 to 420 cSt.
Cavity	12-3, See page M-31
Housing Material	6061-T6 aluminum alloy rated to 207bar, Steel & Ductile iron rated to 350bar

PRESSURE DROP VS.FLOW

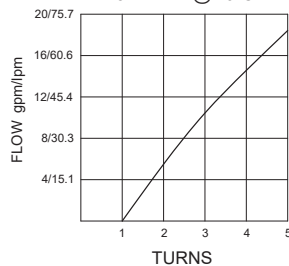


If flow to port ③ is shut off,
flow to port ② will be shut off

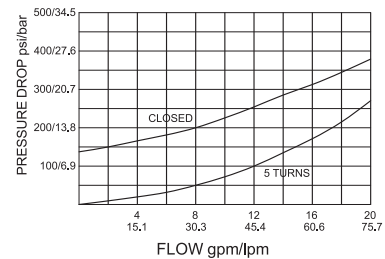
Regulated Flow vs. Pressure
at 75.7 lpm/20 gpm Input Flow



Flow vs. Turns
at 104bar/1500psi
32cSt oil @ 40°C



③ to ①
32cSt oil @ 40°C



TO ORDER

LFR - 12 - 3C - * - * *

1

2

3

4

5

1 Function
LFR=Adjustable Pressure-compensated Flow Control Valve

2 Size
12=12 Size

3 Optional Flow Setting
3C=Adjustable Orifice

4 Adjustment
K=Plastic Knob
Omit=3/16" Hex Allen Head

5 Port Size
Omit=None
8T=SAE8
10T=SAE10
4G=G 1/2
6G=G 3/4

※Other port sizes are available

F

INSTALLATION DIMENSIONS

Unit=Millimeters

