

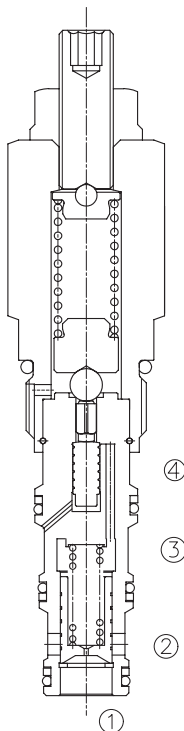
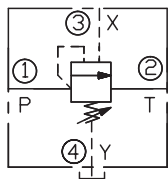
LPWP-10

Pilot-operated Priority
Unloading Valve

DESCRIPTION

A cartridge-style pilot-operated priority unloading valve

SYMBOL



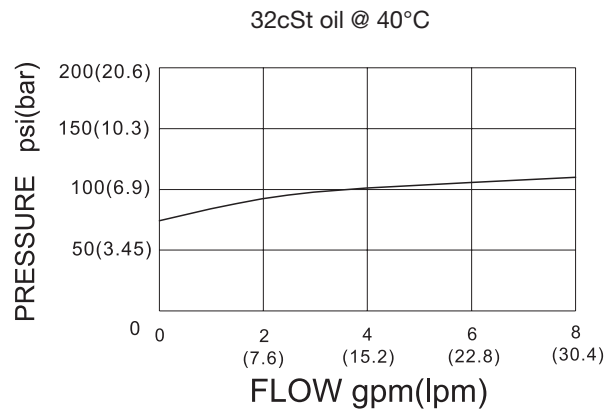
OPERATION

Flow is blocked from ① to ② until pressure is increased to meet the selected valve setting, lifting the small, pilot-stage poppet from its seat. This action exhausts oil above the main-stage piston (spool type), allowing it to shift fully and unload flow from ① through ② with minimal pressure drop. Similarly, when the remote pilot pressure at port ③ exceeds the pressure setting, a secondary piston lifts the pilot-stage poppet from its seat, again exhausting fluid from ① through ②. The spring chamber is drained to tank at ④, any pressure at ④ will be additive to the valve setting.

SPECIFICATIONS

Max. Operating Pressure	350bar
Flow	See PRESSURE DROP VS. FLOW graph.
Standard Spring Ranges	7 to 105 bar, preset: 70 bar 90 to 210 bar, preset: 120 bar 150 to 350 bar, preset: 200 bar
Temperature	-40°F to +250°F (-40°C to +120°C)
Filtration	See page N-1
Fluids	Mineral-based fluids with viscosities of 7.4 to 420 cSt.
Cavity	10-4, See page M-2
Housing Material	Steel & Ductile iron rated to 350bar

PRESSURE DROP VS. FLOW



TO ORDER

LPWP - 10 - * * - * *

┌───┐
1
┌───┐
2
┌───┐
3
┌───┐
4

1 Function
 LPWP=Pilot-operated Priority
 Unloading Valve

2 Size
 10=10 Size

3 Spring Ranges
 15=100-1500psi(7-105bar)
 Preset:1000psi(70bar)
 30=1300-3000psi(90-210bar)
 Preset:1750psi(120bar)
 50=2200-5000psi(150-350bar)
 Preset:2900psi(200bar)

4 Port Size
 Omit=None
 6T=SAE 6
 8T=SAE 8
 2G=G 1/4
 3G=G 3/8

※ See page K-6 for detail of housing
 ※ Other port sizes are available

INSTALLATION DIMENSIONS

Unit=Millimeters

