

LRBAC

Direct-acting Relief Valve
(Pilot-capacity)

DESCRIPTION

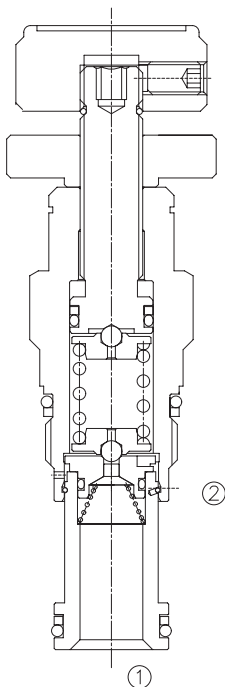
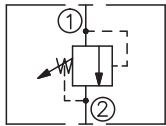
A cartridge-style direct-acting poppet-type pilot-capacity relief valve

OPERATION

Direct-acting, relief cartridges are used to remotely control the pressure setting of other pilot-operated valves.

Because capacity is limited to pilot flow, these valves should be used with other higher flow valves; Back pressure on the tank port ② is directly additive to the valve setting at a 1:1 ratio.

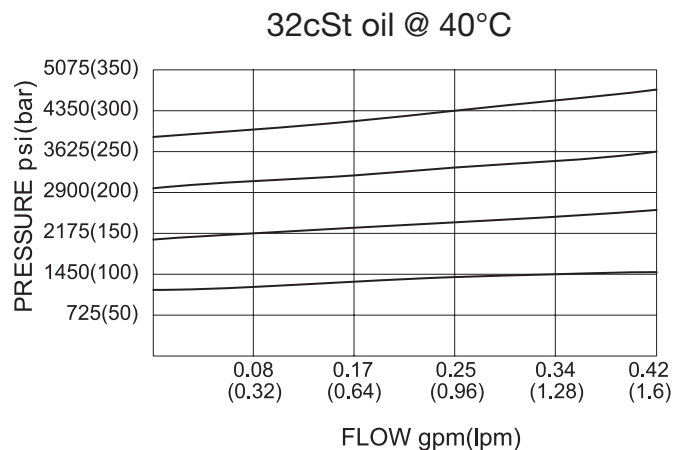
SYMBOL



SPECIFICATIONS

Max. Operating Pressure	350bar
Capacity	See PRESSURE DROP VS. FLOW graph.
Internal Leakage	2 drops/min.
Response Time	2 ms
Standard Spring Ranges	A:25psi (1.7 bar) to 3000psi(210 bar), preset:1000psi(70 bar) B:25psi (1.7 bar) to 1500psi(105 bar), preset:1000psi(70 bar) C:25psi (1.7 bar) to 6000psi(420 bar), preset:1000psi(70 bar) D:25psi (1.7 bar) to 800psi(55 bar), preset: 400psi(28 bar) E:25psi (1.7 bar) to 400psi(28 bar), preset: 200psi(14 bar) W:25psi (1.7 bar) to 4500psi(315 bar), preset:1000psi(70 bar)
Temperature	-40°F to +250°F(-40°C to +120°C)
Filtration	See page N-1
Fluids	Mineral-based fluids with viscosities of 7.4 to 420 cSt.
Cavity	SUN T-10A, See page M-7
Housing Material	Steel & Ductile iron rated to 350bar

PRESSURE DROP VS.FLOW



TO ORDER

LRB * C - * * * - * *

┌──┐
┌──┐
┌──┐
┌──┐
┌──┐
┌──┐

1
2
3
4
5
6

<p>1 Function LRB=Direct-acting Relief Valve</p>	<p>4 Spring Ranges A=25-3000psi(1.7-210bar) Preset:1000psi(70bar) B=25-1500psi(1.7-105bar) Preset:1000psi(70bar) C=25-6000psi(1.7-420bar) Preset:1000psi(70bar) D=25-800 psi(1.7-55bar) Preset:400psi(25bar) E=25-400 psi(1.7-28bar) Preset:200psi(14bar) W=25-4500psi(1.7-315bar) Preset:1000psi(70bar)</p>	<p>6 Port Size Omit=None 6T=SAE6 8T=SAE8 2G=G 1/4 3G=G 3/8</p>
<p>2 Flow A=1L/min</p>	<p>5 Seal Kits N=Buna N V=Viton</p>	<p>※ See page K-13 for detail of housing ※ Other port sizes are available</p>

E

INSTALLATION DIMENSIONS

Unit=Millimeters

