

DB20K2-X

Pilot-operated Relief Valve

DESCRIPTION

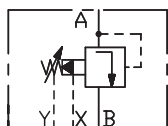
A cartridge-style pilot-operated poppet -type relief valve with an external control port

OPERATION

The valve with spring chamber port “Y” external drain, prevents flow from port “A” to port “B” until pressure at port “A” exceeds the set Cracking Pressure and opens the pilot section. The pilot flow creates a pressure differential across the poppet which causes the valve to open allowing flow from port “A” to port “B” protecting the circuit from over pressurization;

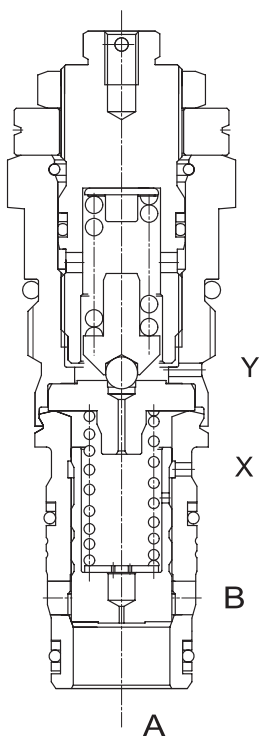
With Port “X” connected to tank(usually controlled by a solenoid directional valve),the valve can be converted in such a way that it is capable of being electrically to non-pressurized circulation.(main piston is open).

SYMBOL

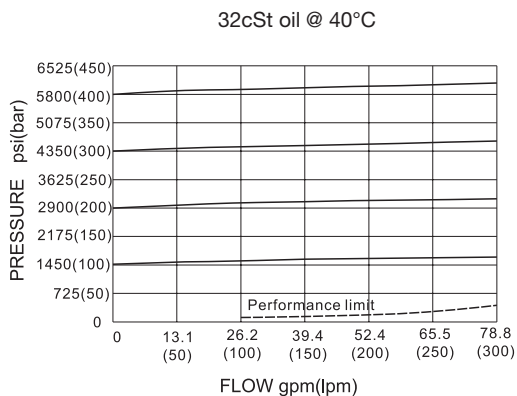


SPECIFICATIONS

Max.Operating Pressure	350bar
Flow	250L/min.
Reseat Pressure	85% of cracking pressure(cracking pressure at 0.95 lpm /0.25 gpm)
Temperature	-40°F to +250°F(-40°C to +120°C)
Filtration	See page N-1
Fluids	Mineral-based fluids with viscosities of 7.4 to 420 cSt.
Cavity	20K2, See page M-11
Housing Material	Steel & Ductile iron rated to 350bar

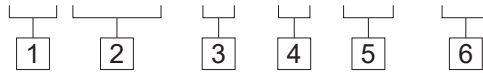


PRESSURE DROP VS.FLOW



TO ORDER

DB 20K2 - X - * / * * - * *



1 Function DB=Pilot-operated Cartridge Relief Valve	4 Adjustment K=Ø30 Dia Knob Omit=10" Hex Allen head	6 Port Size Omit=None 8T=SAE 8 10T=SAE 10
2 Size 20K2=20K2 Size	5 Optional Pressure Setting Omit=Standard Setting Example:0250=250bar	※Other port sizes are available
3 External Pilot Port		

INSTALLATION DIMENSIONS

Unit=Millimeters

