

# LFREA

Adjustable Pressure-compensated Flow Control Valve

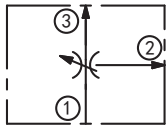
## DESCRIPTION

A cartridge-style adjustable pressure-compensated flow control valve

## OPERATION

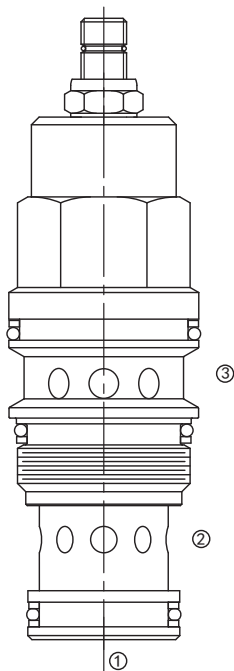
The valve maintains a constant flow rate from ③ regardless of load pressure changes in the system downstream of ③, or in the bypass leg at ②. The valve will pressure-compensate once a minimum pressure drop (determined by spring adjustment setting) is achieved from ① to ③. Bypass port ② maybe fully pressurized. The cartridge may be adjusted to  $\pm 22\%$  of normally setting. Flow out of priority port ③ may vary based on input flow amount, particularly with lower temperatures and increased fluid viscosities.

## SYMBOL



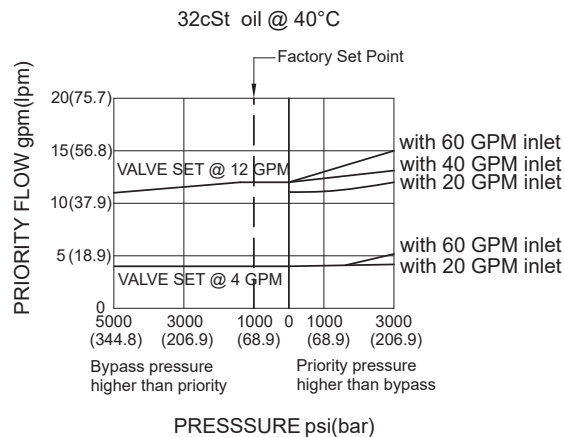
## SPECIFICATIONS

Operating Pressure	ports ①&②: 350bar port ③: 210bar
Max. Input Flow	240L/min
Flow Setting	0.8-95lpm.
Temperature	-40°F to +250°F(-40°C to +120°C)
Filtration	See Page N-1
Fluids	Mineral-based fluids with viscosities of 7.4 to 420 cSt.
Cavity	SUN T-17A, See page M-7
Housing Material	Steel & Ductile iron rated to 350bar



If flow to port ③ is shut off, flow to port ② will be shut off

## PRESSURE DROP VS.FLOW



## TO ORDER

**LFR E A - \* A \* - \* \* - \* \***  

1
2
3
4
5
6
7

<b>1 Function</b> LFR=Adjustable Pressure-compensated Flow Control Valve	<b>4 Flow Setting Range</b> A=0.2-25gpm(0.8-95L/min) Replaceable Orifice	<b>7 Port Size</b> Omit=None 12T=SAE12 16T=SAE16 6G=G 3/4 8G=G 1
<b>2 Capacity</b> E=95 L/Min	<b>5 Seal Kits</b> N=Buna-N V=Viton	※See page K-25 for detail of housing ※Other port sizes are available
<b>3 Control</b> L= Standard Screw Adjustment	<b>6 Optional Flow Setting</b> M6.5=5.07 - 7.93 lpm	

F

## INSTALLATION DIMENSIONS

Unit=Millimeters

