

LPC2-08

Pilot-to-close Check Valve

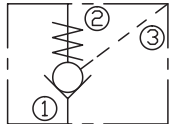
DESCRIPTION

A cartridge-style pilot-to-close poppet-type check valve

OPERATION

Pressure at ① overcomes the spring-bias poppet and allows free flow to ② . Flow in the opposite direction, from ② to ① ,is blocked by the poppet.
 When the required pilot pressure is achieved at ③ ,the poppet is held closed to block flow between ① and ② .The pilot piston area to poppet seat area ratio is 3 to 1.

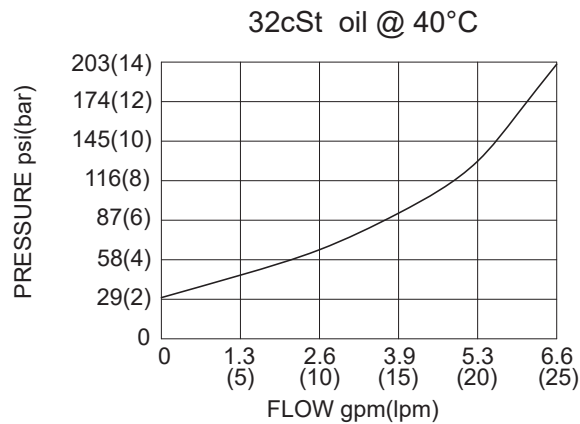
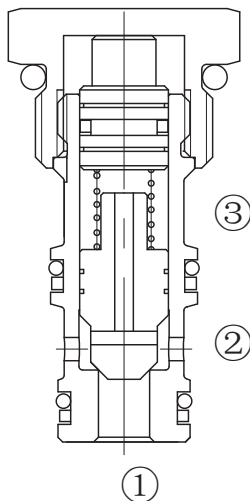
SYMBOL



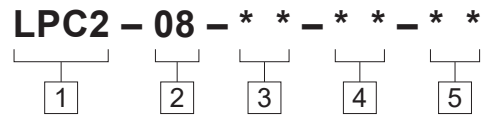
SPECIFICATIONS

| | |
|--------------------|--|
| Operating Pressure | 210bar |
| Flow | See PRESSURE DROP VS.FLOW graph. |
| Internal Leakage | 2 drops/min max. at 350bar |
| Cracking Pressure | 2.1=2.1bar |
| Pilot Ratio | 3:1 |
| Temperature | -40°F to +250°F(-40°C to +120°C) |
| Filtration | See Page N-1 |
| Fluids | Mineral-based fluids with viscosities of 7.4 to 420 cSt. |
| Cavity | 08-3,See page M-1 |
| Housing Material | 6061-T6 aluminum alloy rated to 207bar, Steel & Ductile iron rated to 350bar |

PRESSURE DROP VS.FLOW



TO ORDER



1 Function
LPC2=Pilot to Close Check Valve

4 Cracking Pressure
2.1=2.1bar

5 Port Size
Omit= None
4T=SAE4
6T=SAE6
2G=G 1/4
3G=G 3/8

2 Size
08=08 Size

3 Seal Kits
N=Buna N(Std)
NS=Buna N with sealed piston
6.2bar(90psi)minumun spring
V= V-Fluorocarbon
VS=Fluorocarbon with sealed piston
6.2bar(90psi)minumun spring

※See page K-2 for detail of housing
※Other port sizes are available

D

INSTALLATION DIMENSIONS

Unit=Millimeters

