

# LFR-M14

Non-adjustable Pressure-compensated Flow Control Valve

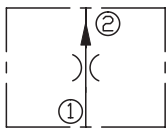
## DESCRIPTION

A cartridge-style, non-adjustable, pressure-compensated flow control valve

## OPERATION

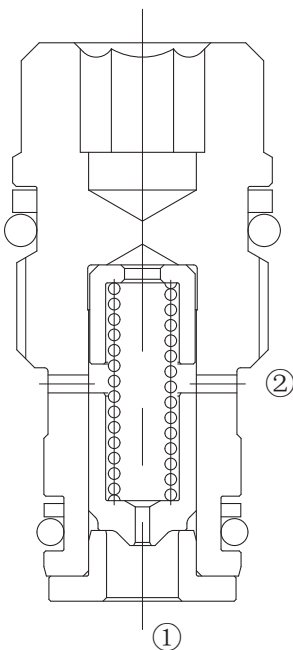
The valve maintains a constant flow within specified accuracies from ① to ② regardless of downstream load pressure. When flow produces a minimum predetermined pressure differential across the compensator spool control orifice, the spool shifts against the spring force to throttle the flow and maintain the flow setting. Reverse flow is not regulated.

## SYMBOL

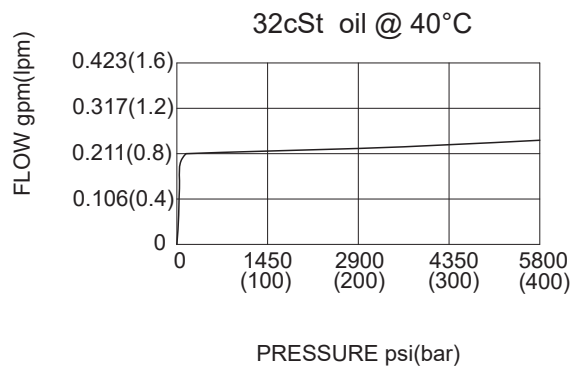


## SPECIFICATIONS

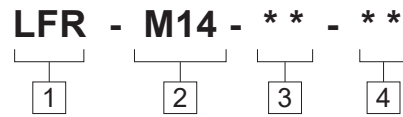
Max.Operating Pressure	420bar
Flow setting	0.4-0.8-1.2 l/min.
Flow Maintenance Accuracy	±15%
Temperature	-40°F to +250°F(-40°C to +120°C)
Filtration	See Page N-1
Fluids	Mineral-based fluids with viscosities of 7.4 to 420 cSt.
Cavity	Rexroth-R/DBD.4k,See page M-14
Housing Material	Steel & Ductile iron rated to 350bar



## PRESSURE DROP VS.FLOW



**TO ORDER**



**1 Function**  
LFR=Non-adjustable , Pressure-compensated  
Flow control Valve

**2 Size**  
M14=M14X1 Size

**3 Optional Flow Setting**  
M0.4=0.4lpm  
M0.8=0.8lpm  
M1.2=1.2lpm

**4 Port Size**  
Omit= None  
4T=SAE4  
6T=SAE6  
2G=G 1/4  
3G=G 1/8

※See page K-4 for detail of housing  
※Other port sizes are available

F

**INSTALLATION DIMENSIONS**

Unit=Millimeters

