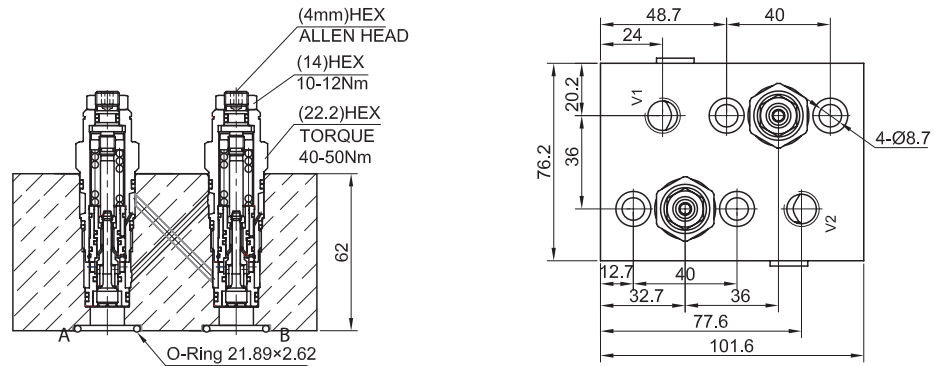


LCBBA-***-LWZM-2N

Dual Counterbalance Manifolds

DESCRIPTION

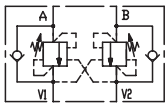
Dual counterbalance manifolds



OPERATION

It provides static and dynamic control of load by regulating the flow IN and OUT of the actuator, through ports A and B. This valve module includes 2 sections, each one composed by a check and a relief valve pilot assisted by pressure in the opposite line: the check section allows free flow into actuator, then locks the load against reverse movement; with pilot pressure applied at line across, the pressure setting of the relief is reduced in proportion to the stated ratio until opening and allowing controlled reverse flow. Back-pressure at V1 or V2 is additive to pressure settings in all functions.

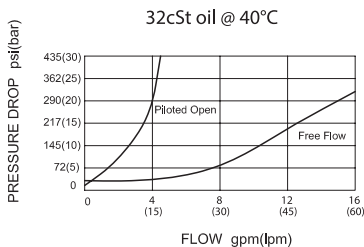
SYMBOL



SPECIFICATIONS

Body type	Motor mount
Interface	Danfoss OMP
Body Feature	Cross pilot
Port Size	V1,V2: 1/4" NPT.
Internal Leakage	5 drops/min. at nominal pressure
Temperature	-40°F to +250°F(-40°C to +120°C)
Filtration	See page N-1
Fluids	Mineral-based fluids with viscosities of 7.4 to 420 cSt.
Cavity	SUN T-11A, See page M-6
Housing Material	6061-T6 aluminum alloy rated to 207bar, Steel & Ductile iron rated to 350bar

PRESSURE DROP VS.FLOW



TO ORDER

LCBBA - *** - LWZM - 2N - *

1 2 3 4

1 Cavity LCBBA=SUN T-11A	3 Port Size 2N=1/4"NPT(V1, V2 Port) ※Other port sizes are available	4 Housing Material Omit=Aluminum, 6061-T6 S=Steel
2 Body Type		