

LSV2-10-34-M

4-Way,3-Position,
Spool-type Solenoid Valve

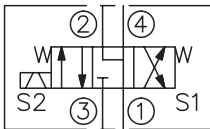
DESCRIPTION

A solenoid operated, 4-way, 3-position, motor center spool-type cartridge valve.

OPERATION

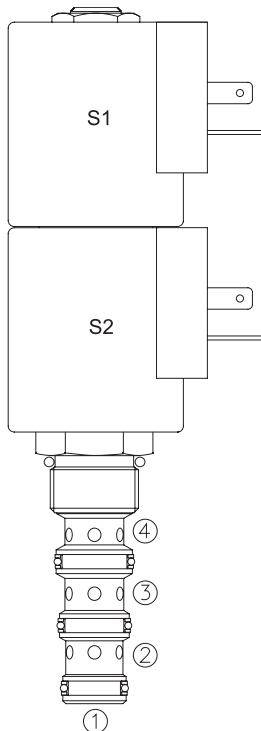
When de-energized, the valve allows flow from ② to ① and from ④ to ① while blocking to ③. When coil S1 is energized, the valve allows flow from ③ to ④ and from ② to ①; When coil S2 is energized, the valve allows flow from ③ to ② and from ④ to ①.

SYMBOL

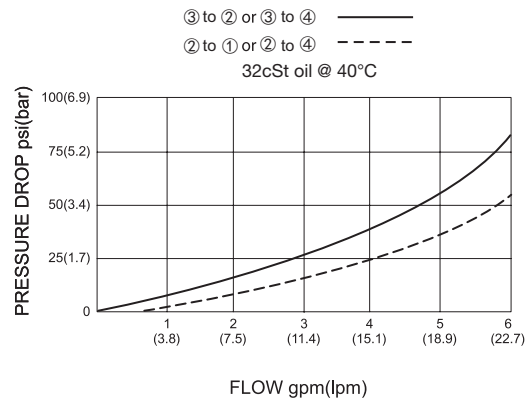


SPECIFICATIONS

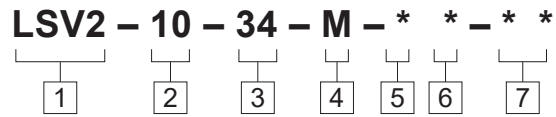
Operating Pressure	207bar
Flow	See PERFORMANCE CHARACTERISTIC graph.
Internal Leakage	164cc/min max.
Temperature	-40°F to +212°F(-40°C to +100°C)
Coil Duty Rating	Continuous from 85% to 115% of nominal voltage
Filtration	See page N-1
Fluids	Mineral-based fluids with viscosities of 7.4 to 420 cSt.
Cavity	10-4, See page M-2
Housing Material	6061-T6 aluminum alloy rated to 207bar, Steel & Ductile iron rated to 350bar



PRESSURE DROP VS.FLOW



TO ORDER



- 1 Function**
LSV2= Solenoid Valve

- 2 Size**
10=10 Size

- 3 Flow Path**
34=4-way

- 4 Style**
M=Motor Center

- 5 Coil Voltage**
1=12 VDC
2=24 VDC
3=110 VAC
4=220 VAC
5=10 VDC

- 6 Coil Connector Type**
D= Double Lead
H= Hirschmann
C= Conduit
ER= Deutsch Connector(Water-proof Coil)
B= Double Spade

- 7 Port Size**
Omit=None
6T=SAE 6
8T=SAE 8
2G=G 1/4
3G=G 3/8

- ※ See page K-6 for detail of housing
- ※ Other port sizes are available

INSTALLATION DIMENSIONS

Coil Must Be Installed With Letter Up

Unit=Millimeters

