

MHDBV16K2-3X420VFB

Pilot-operated Relief Valve

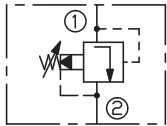
DESCRIPTION

A pilot-operated, poppet-type pressure relief valve

OPERATION

The valve prevents flow from ① to ② until pressure at ① exceeds the set Cracking Pressure and opens the pilot section. The pilot flow creates a pressure differential across the poppet which causes the valve to open allowing flow from ① to ② protecting the circuit from over pressurization. Pressure at ② is directly additive to the relief setting of the valve.

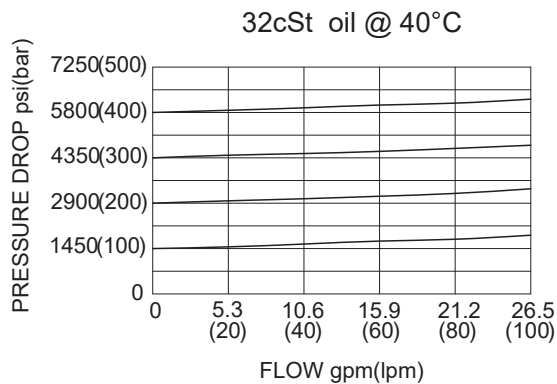
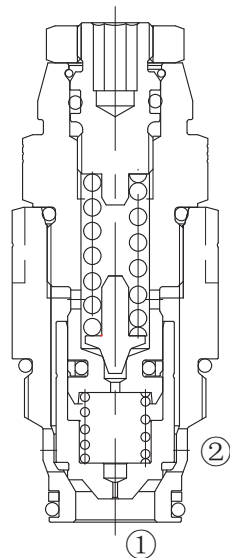
SYMBOL



SPECIFICATIONS

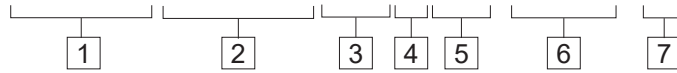
Max. Operating Pressure	420bar
Flow	100 L/min
Internal Leakage	15 drops/min max. to 70% of nominal setting
Temperature	-40°F to +250°F (-40°C to +120°C)
Filtration	See Page N-1
Fluids	Mineral-based fluids with viscosities of 7.4 to 420 cSt.
Cavity	Rexroth-FB, See page M-15
Housing Material	Steel & Ductile iron rated to 350bar

PRESSURE DROP VS. FLOW



TO ORDER

MHDBV 16K2-3X 420 V FB / * * * * - * *



※Other port sizes are available

INSTALLATION DIMENSIONS

Unit=Millimeters

