

MHDBV22K2

Pilot-operated Relief Valve

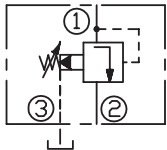
DESCRIPTION

A cartridge-style pilot-operated poppet-type relief valve

OPERATION

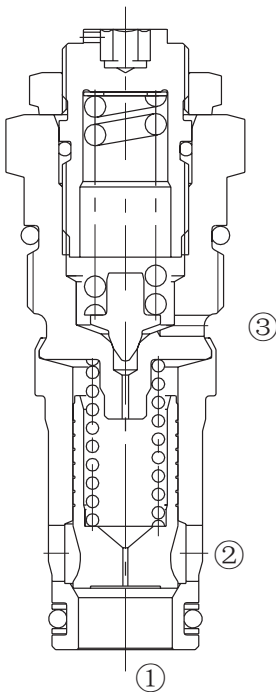
The valve prevents flow from port “P” to port “T” until pressure at port “P” exceeds the set Cracking Pressure and opens the pilot section. The pilot flow creates a pressure differential across the poppet which causes the valve to open allowing flow from port “P” to port “T” protecting the circuit from over pressurization.

SYMBOL

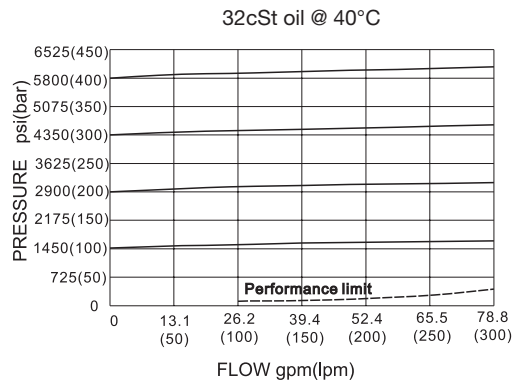


SPECIFICATIONS

Max.Operating Pressure	350bar
Flow	250L/min.
Reseat Pressure	85% of cracking pressure cracking pressure at 0.95 lpm /0.25 gpm
Temperature	-40°F to +250°F(-40°C to +120°C)
Filtration	See page N-1
Fluids	Mineral-based fluids with viscosities of 7.4 to 420 cSt.
Cavity	22K2, See page M-11
Housing Material	Steel & Ductile iron rated to 350bar



PRESSURE DROP VS.FLOW



TO ORDER

MHDBV – 22K2

1

2

1 Function
MHDBV=Adjustable Pilot-operated Cartridge Relief Valve

2 Size
22K2=22K2 Size

INSTALLATION DIMENSIONS

Unit=Millimeters

