

LPBBB

Pilot-operated Pressure Reducing Valve

DESCRIPTION

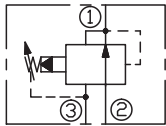
A cartridge-style pilot-operated spool-type pressure reducing valve

OPERATION

Pilot-operated, pressure reducing valves reduce a high primary pressure at the inlet (port ②) to a constant reduced pressure at port ① , allowing circuits with multiple pressure requirements to be operated using a single pump.

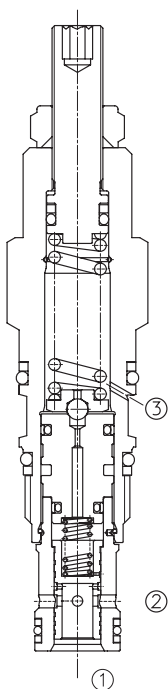
Pressure at port ③ is directly additive to the valve setting at a 1 :1 ratio and should not exceed 4500 psi (315 bar).Minimum setting is 75 psi (5 bar) for all spring ranges.

SYMBOL

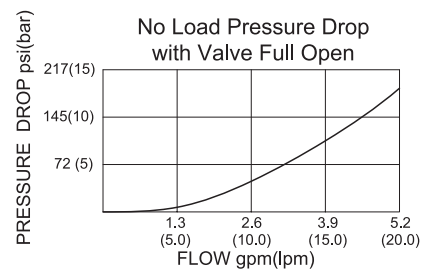
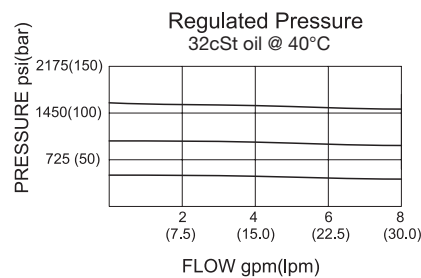


SPECIFICATIONS

Max.Operating Pressure	350bar
Capacity	See PRESSURE DROP VS. FLOW graph.
Standard Spring Ranges	A: 5-210 bar, preset:14bar B: 5-105 bar, preset:14bar N: 5- 55 bar, preset:14bar Q: 5- 28 bar, preset:14bar W: 5-315 bar, preset:60bar
Temperature	-40°F to +250°F(-40°C to +120°C)
Filtration	See page N-1
Fluids	Mineral-based fluids with viscosities of 7.4 to 420 cSt.
Cavity	SUN T-163A, See page M-5
Housing Material	Steel & Ductile iron rated to 350bar



PRESSURE DROP VS.FLOW



TO ORDER

LPB B B - * * * - * *

1

2

3

4

5

6

- 1 Function**
LPB=Pilot-operated Pressure Reducing Valve
-
- 2 Capacity**
B=20L/min
-
- 3 Control**
L=Standard Screw Adjustment

- 4 Spring Ranges**
 A=75-3000psi(5-210bar)
 Preset:200psi(14bar)
 B=75-1500psi(5-105bar)
 Preset:200psi(14bar)
 N=75-800psi(5-55bar)
 Preset:200psi(14bar)
 Q=75-400psi(5-28bar)
 Preset:200psi(14bar)
 W=75-4500psi(5-315bar)
 Preset:870psi(60bar)

- 5 Seal Kits**
 N=Buna N
 V= Viton
-
- 6 Port Size**
 Omit=None
 8T=SAE8
- ※See page K-16 for detail of housing
 ※Other port sizes are available

INSTALLATION DIMENSIONS

Unit=Millimeters

