

# LPOSRV2PRK-M30

Pilot-operated Pressure Limitation  
And Feed Valve With Hydraulic  
Pressure Sequencing Stage

## DESCRIPTION

A pilot-operated, pressure limitation and feed valve with hydraulic pressure cut-off stage

## OPERATION

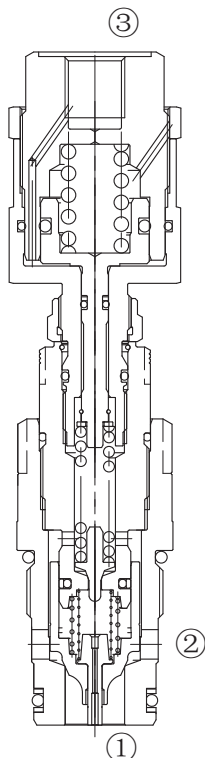
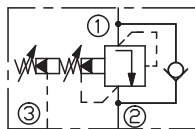
The valve prevents flow from ① to ② until pressure at ① exceeds the set Cracking Pressure and opens the pilot section. The pilot flow creates a pressure differential across the poppet which causes the valve to open allowing flow from ① to ② protecting the circuit from over pressurization.

Pressure at ② is directly additive to the relief setting of the valve.

If the pressure at ② is at least 2 bar higher than Pressure at ① . The main poppet will be lifted out of its seat, to allow flow from ② to ① , this feed function is used to make up for lacking hydraulic fluid volumes.

By connecting pilot oil pressure to the external port ③ , the control piston is pressurized and lifted. This reduces the preload of the main spring and the maximum set system pressure.

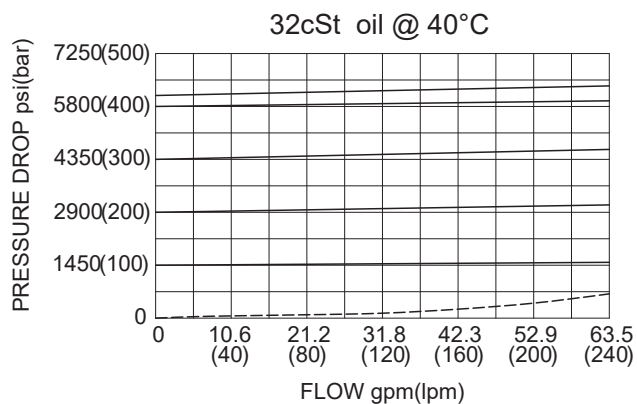
## SYMBOL



## SPECIFICATIONS

Max.Operating Pressure	420bar
Flow	200 L/min
Internal Leakage	10 drops/min max. to 80% of nominal setting
Temperature	-40°F to +250°F(-40°C to +120°C)
Filtration	See Page N-1
Fluids	Mineral-based fluids with viscosities of 7.4 to 420 cSt.
Cavity	Rexroth-LG, See page M-15
Housing Material	Steel & Ductile iron rated to 350bar

## PRESSURE DROP VS.FLOW



TO ORDER

LPOSRV2 PRK - M30 - \*\* / \*\*\*\* / \*\*\*\* - \*\*



※Other port sizes are available

INSTALLATION DIMENSIONS

Unit=Millimeters

