

# ILCV2000-G38

In-line Check Valve

## DESCRIPTION

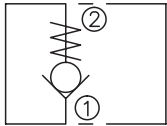
An in-line, poppet-type check valve

## OPERATION

When pressure at ① rises above the spring bias pressure, the poppet is lifted and flow allowed from ① to ②.

The valve is closed (checked) from ② to ①.

## SYMBOL



## SPECIFICATIONS

|                         |  |
|-------------------------|--|
| Max. Operating Pressure | 350bar   |
| Flow                    | See PRESSURE DROP VS.FLOW graph.                         |
| Internal Leakage        | 2 drops/min max. at 350bar                               |
| Cracking Pressure       | <0.5bar  |
| Temperature             | -40°F to +250°F (-40°C to +120°C)                        |
| Fluids                  | Mineral-based fluids with viscosities of 7.4 to 420 cSt. |
| Housing Material        | Steel & Ductile iron rated to 350bar                     |

## PRESSURE DROP VS.FLOW

