

# LPS-08

Sequence Valve

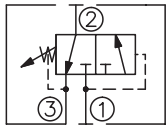
## DESCRIPTION

A cartridge-style spool-type sequence valve with internal pilot and drain

## OPERATION

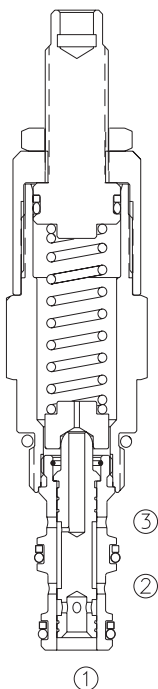
In its steady state, the valve blocks flow at ①, while allowing flow to pass from ② to ③. On attainment of a pre-determined pressure at ①, the cartridge shifts to open ① to ②.

## SYMBOL

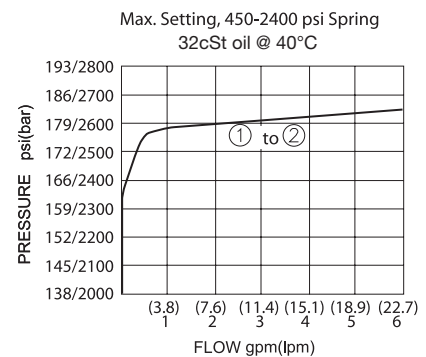
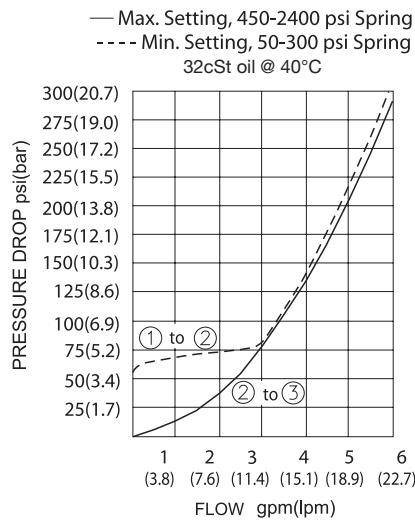


## SPECIFICATIONS

Operating Pressure	240bar
Flow	See PRESSURE DROP VS. FLOW graph.
Internal Leakage	82 cc/min max. to 85% of nominal setting
Standard Spring Ranges	3.4- 20.7 bar, preset:10 bar 6.9- 41.4 bar, preset:21 bar 10.3- 89.7 bar, preset:45 bar 31.0-165.5 bar, preset:83 bar
Temperature	-40°F to +250°F(-40°C to +120°C)
Filtration	See page N-1
Fluids	Mineral-based fluids with viscosities of 7.4 to 420 cSt.
Cavity	08-3, See page M-1
Housing Material	6061-T6 aluminum alloy rated to 207bar, Steel & Ductile iron rated to 350bar



## PRESSURE DROP VS.FLOW



## TO ORDER

**LPS – 08 – \* \* – \* / \*\*\*\* – \* \***  

1
2
3
4
5
6

**1 Function**

LPS=Sequence Valve With Internal Pilot and Drain

**2 Size**

08=08 Size

**3 Spring Ranges**

3=50-300psi(3.4-20.7bar)

Preset:145psi(10bar)

6=100-600psi(6.9-41.4bar)

Preset:300psi(21bar)

13=150-1300psi(10.3-89.7bar)

Preset:650psi(45bar)

24=450-2400psi(31.0-165.5bar)

Preset:1200psi(83bar)

**4 Adjustment**

K=1-1/2" Dia Knob

Omit = 1/4" Hex Allen head

**5 Optional Pressure setting**

Omit=Standard Setting

Example:0120=120Bar

**6 Port Size**

Omit=None

4T=SAE4

6T=SAE6

2G=G 1/4

3G=G 3/8

※ See page K-2 for detail of housing

※ Other port sizes are available

E

## INSTALLATION DIMENSIONS

Unit=Millimeters

