

LPS-10

Sequence Valve

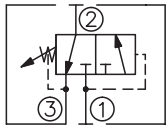
DESCRIPTION

A cartridge-style spool-type sequence valve with internal pilot and drain

OPERATION

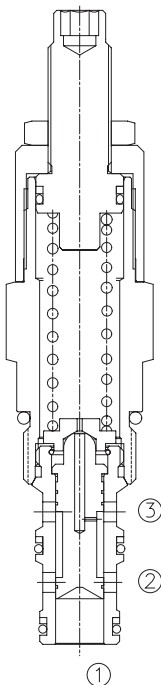
In its steady state, the valve blocks flow at ①, while allowing flow to pass from ② to ③. On attainment of a pre-determined pressure at ①, the cartridge shifts to open ① to ②.

SYMBOL

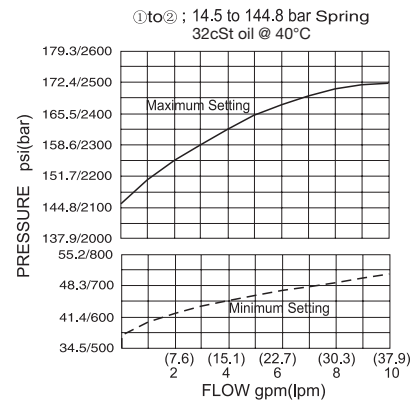
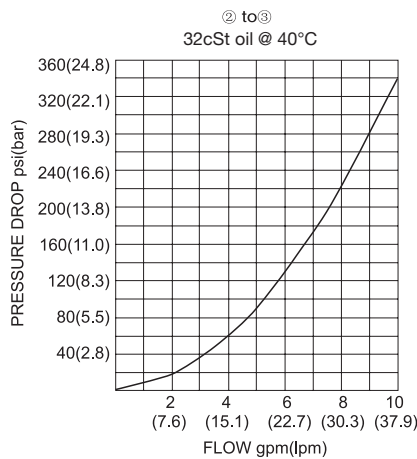


SPECIFICATIONS

Operating Pressure	207bar
Flow	See PRESSURE DROP VS. FLOW graph.
Internal Leakage	82 cc/min max. to 85% of nominal setting
Standard Spring Ranges	2.8-28 bar, preset:13.8bar 14.5-145 bar, preset:72.5bar
Temperature	-40°F to +250°F(-40°C to +120°C)
Filtration	See page N-1
Fluids	Mineral-based fluids with viscosities of 7.4 to 420 cSt.
Cavity	10-3, See page M-2
Housing Material	6061-T6 aluminum alloy rated to 207bar, Steel & Ductile iron rated to 350bar



PRESSURE DROP VS.FLOW



TO ORDER

LPS - 10 - * * - */ ** - * ***

1
2
3
4
5
6

1 Function

LPS=Pilot-operated Spool-type
Sequence Valve

2 Size

10=10 Size

3 Spring Ranges

4=40-400psi(2.8-28bar)
Preset:200psi(13.8bar)
21=210-2100psi(14.5-145bar)
Preset:1050psi(72.5bar)

4 Adjustment

K=1-1/2" Dia Knob
Omit= 1/4" Hex Allen Head

5 Optional Pressure setting

Omit=Standard Setting
Example:0120=120bar

6 Port Size

Omit=None
6T=SAE6
8T=SAE8
2G=G 1/4
3G=G 3/8

※ See page K-5 for detail of housing

※ Other port sizes are available

E

INSTALLATION DIMENSIONS

Unit=Millimeters

