

# LCV-12-P

Check Valve

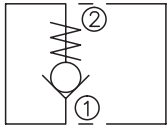
## DESCRIPTION

A cartridge-style poppet-type check valve

## OPERATION

Pressure at ① overcomes the spring-bias poppet and allows free flow from ① to ② . Flow in the opposite direction, from ② to ① ,is blocked by the poppet.

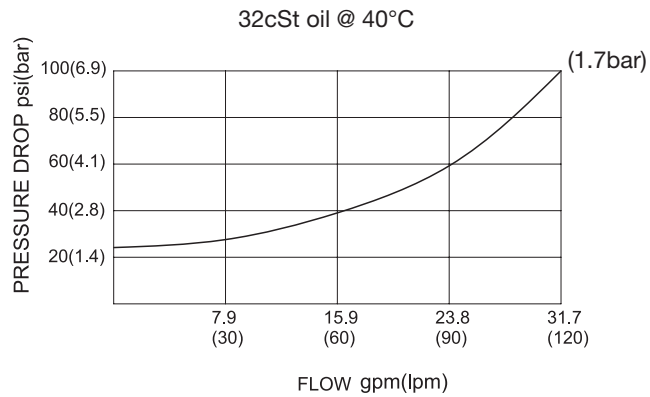
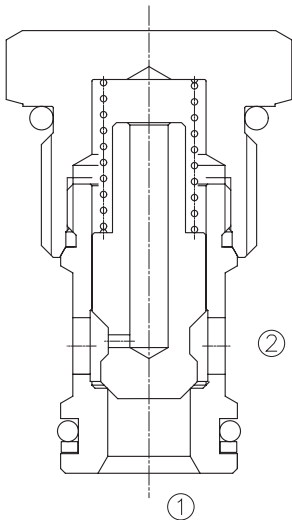
## SYMBOL



## SPECIFICATIONS

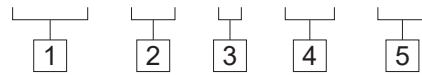
Operating Pressure	250bar
Flow	See PRESSURE DROP VS.FLOW graph.
Internal Leakage	5 drops/min max. at 250bar
Cracking Pressure	1.7=1.7bar 4.5=4.5bar
Temperature	-40°F to +250°F(-40°C to +120°C)
Filtration	See page N-1
Fluids	Mineral-based fluids with viscosities of 7.4 to 420 cSt.
Cavity	12-2,See page M-3
Housing Material	6061-T6 aluminum alloy rated to 207bar, Steel & Ductile iron rated to 350bar

## PRESSURE DROP VS.FLOW



**TO ORDER**

**LCV - 12 - P - \* \* - \* \***



**1 Function**  
LCV=Check Valve

**2 Size**  
12=12 Size

**3 Type**  
P=Poppet

**4 Cracking Pressure**  
1.7=1.7bar  
4.5=4.5bar

**5 Port Size**  
Omit=None  
10T=SAE10  
12T=SAE12  
6G=G 3/4  
8G=G 1

※ See page K-8 for detail of housing  
※ Other port sizes are available

**D**

**INSTALLATION DIMENSIONS**

Unit=Millimeters

