

LFR-08

Non-adjustable Pressure-compensated Flow Control Valve

DESCRIPTION

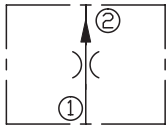
A cartridge-style non-adjustable pressure-compensated flow control valve

OPERATION

The valve maintains a constant flow rate out of ② regardless of load pressure changes in the circuit downstream of ②. The fixed control orifice is factory preset to customer flow specification.

The valve begins to respond to load changes when the flow through the valve creates a pressure differential across the control orifice greater than 5.5 bar, with accurate flow maintenance from 7.6 to 240 bar. Reverse flow(② to ①) returns through the control orifice and is non-compensated.

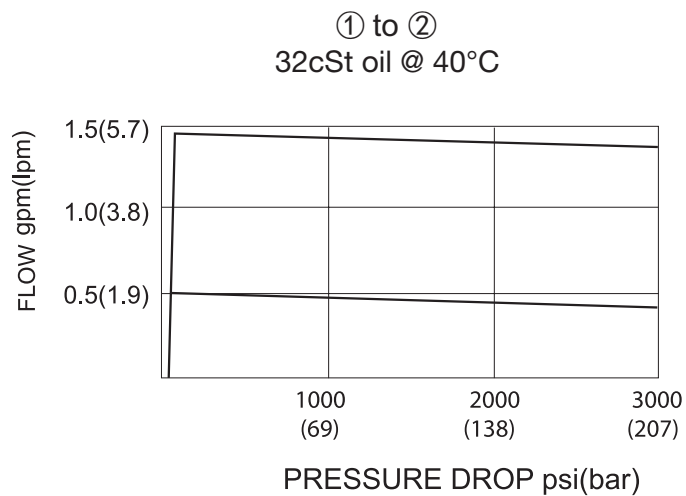
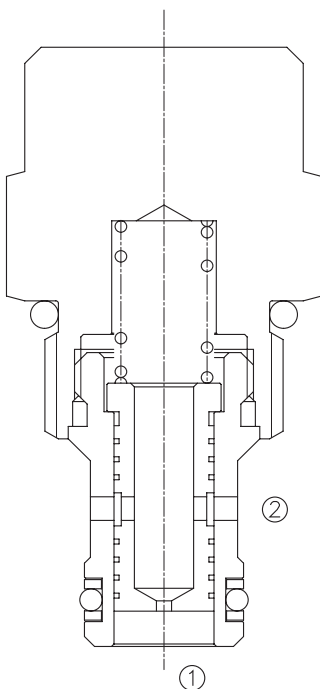
SYMBOL



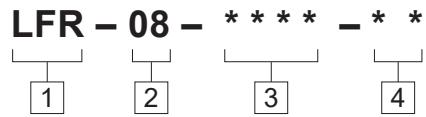
SPECIFICATIONS

Operating Pressure	250bar
Flow Setting	0.4 l/min. min., 7.5 l/min max.
Flow Maintenance Accuracy	0.2 to 1.8 l/min. settings $\pm 15\%$; 1.9 to 7.5 l/min. settings $\pm 10\%$
Temperature	-40°F to +250°F(-40°C to +120°C)
Filtration	See page N-1
Fluids	Mineral-based fluids with viscosities of 7.4 to 420 cSt.
Cavity	08-2, See page M-1
Housing Material	6061-T6 aluminum alloy rated to 207bar, Steel & Ductile iron rated to 350bar

PRESSURE DROP VS.FLOW



TO ORDER



1 Function
 LFR=Non-adjustable
 Pressure-compensated Flow
 Control Valve

2 Size
 08=08 Size

3 Optional Flow Setting
 (Setting in lpm)
 Range:0.4-7.5lpm
 Specify, for example:
 M2.0 2.0lpm
 M5.0 5.0lpm
 etc.
 (Setting in gpm)
 Range:0.1-0.2gpm
 Specify, for example:
 1.0 1.0gpm
 2.0 2.0gpm
 etc.

4 Port Size
 Omit=None
 4T=SAE4
 6T=SAE6
 2G=G 1/4
 3G=G 3/8

※See page K-1 for detail of housing
 ※Other port sizes are available

INSTALLATION DIMENSIONS

Unit=Millimeters

