

LEP-08-35

Logic Element With External Pilot

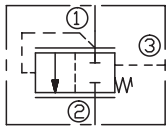
DESCRIPTION

A cartridge-style non-adjustable logic element with external pilot

OPERATION

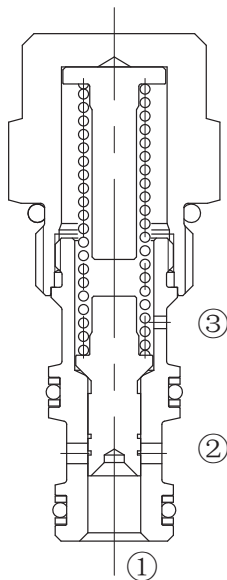
When pressure at ① rises above the selected spring bias pressure against the spool, the valve shifts to allow flow from ① to ② . Pilot pressure at ③ is additive to the spring bias pressure. The valve may be used in switching or compensation type applications.

SYMBOL

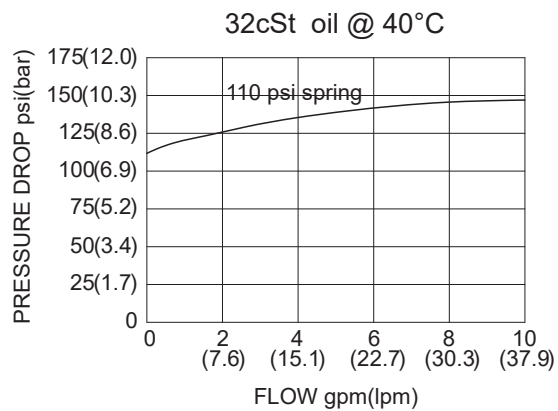


SPECIFICATIONS

Max.Operating Pressure	345bar
Flow	See PRESSURE DROP VS.FLOW graph.
Internal Leakage	115 ml/min max. at 345 bar
Temperature	-40°F to +250°F(-40°C to +120°C)
Filtration	See Page N-1
Fluids	Mineral-based fluids with viscosities of 7.4 to 420 cSt.
Cavity	08-3, See page M-1
Housing Material	Steel & Ductile iron rated to 350bar



PRESSURE DROP VS.FLOW



TO ORDER

LEP - 08 - 35 - * * - * *

┌───┐
┌───┐
┌───┐
┌───┐
┌───┐

└───┘
└───┘
└───┘
└───┘
└───┘

1
2
3
4
5

1 Function
LEP= Cartridge-style Non-adjustable Logic Element With External Pilot

3 Type
35=Spool, Normally Closed, External Pilot Source

5 Port Size
Omit= None
6T=SAE 6
8T=SAE 8
2G=G 1/4
3G=G 3/8

2 Size
08=08 Size

4 Differential Pressure
10=10psi(0.7bar)
40=40psi(2.8bar)
80=80psi(5.5bar)
110=110psi(7.6bar)
150=150psi(10.3bar)

※ See page K-2 for detail of housing
※ Other port sizes are available

INSTALLATION DIMENSIONS

Unit=Millimeters

H

