

LDPR5-10

Direct-acting Pressure Reducing/
Relieving Valve

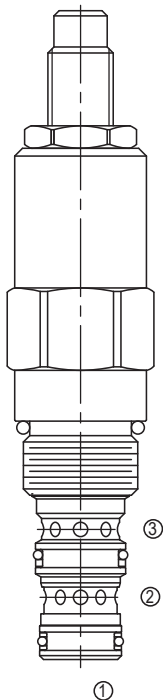
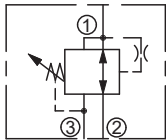
DESCRIPTION

A cartridge-style direct-acting spool-type pressure reducing/relieving valve

OPERATION

In its steady state, the valve allows flow to pass bi-directionally from ② to ①, with the spring chamber constantly drained at ③. On attainment of a pre-determined pressure at ①, the cartridge shifts to restrict input flow at ②, thereby regulating pressure at ①. In this mode, the valve will also relieve ① to ③ at approximately 10 bar over the reducing setting.

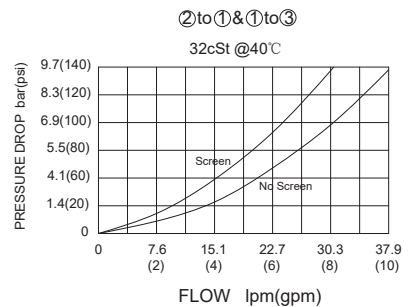
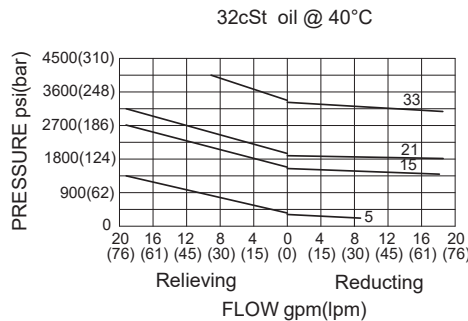
SYMBOL



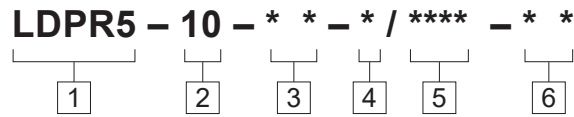
SPECIFICATIONS

Operating Pressure	Ports ①&②: 345bar Port ③: 69bar
Flow	See PRESSURE DROP VS. FLOW graph.
Internal Leakage	from ② to ③ 82cc/min max.
Standard Spring Range	10.3-37.9 bar, preset: 19bar 6.9-103.4 bar, preset: 57bar 27.6-144.8 bar, preset: 72bar 55.2-227.5 bar, preset: 114bar
Temperature	-40°F to +250°F (-40°C to +120°C)
Filtration	See Page N-1
Fluids	Mineral-based fluids with viscosities of 7.4 to 420 cSt.
Cavity	10-3, See page M-2
Housing Material	Steel & Ductile iron rated to 350bar

PRESSURE DROP VS. FLOW



TO ORDER



1 Function
LDPR5=Direct-acting Spool-type
Pressure Reducing/Relieving Valve

2 Size
10=10 Size

3 Spring Ranges
5=150-550psi(10.3-37.9bar)
Preset:275psi(19bar)
15=100-1500psi(6.9-103.4bar)
Preset:750psi(57bar)
21=400-2100psi(27.6-144.8bar)
Preset:1050psi(72bar)
33=800-3300psi(55.2-227.5bar)
Preset:1650psi(114bar)

4 Adjustment
K=1-1/2" Dia Knob
Omit = 1/4" Hex Allen Head

5 Optional Pressure Setting
Omit=Standard Setting
Example:0100=100Bar

6 Port Size
Omit=None
6T=SAE6
8T=SAE8
2G=G 1/4
3G=G 3/8

※ See page K-5 for detail of housing
※ Other port sizes are available

INSTALLATION DIMENSIONS

Unit=Millimeters

