

LCXJA

Check Valve

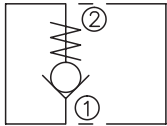
DESCRIPTION

A cartridge-style poppet-type check valve

OPERATION

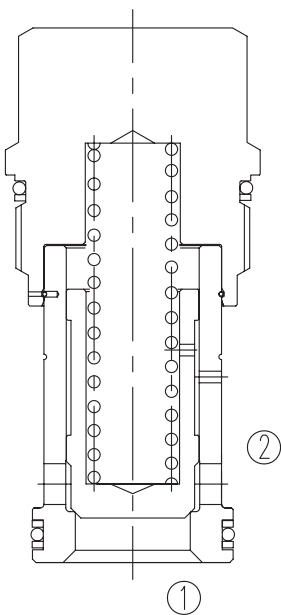
Pressure at ① overcomes the spring-bias poppet and allows free ① to ② . Flow in the opposite direction, from ② to ① ,is blocked by the poppet.

SYMBOL

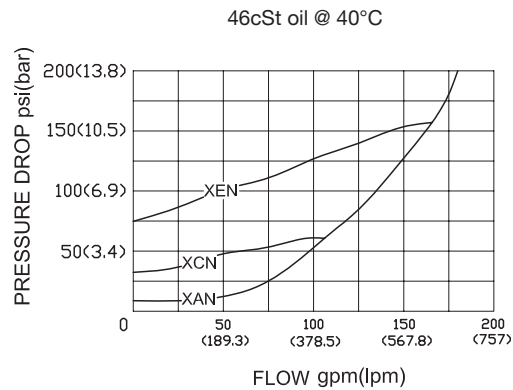


SPECIFICATIONS

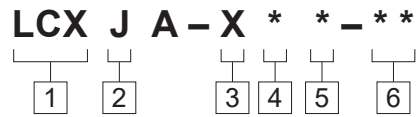
| | |
|--------------------|---|
| Operating Pressure | 350bar |
| Flow | See PRESSURE DROP VS.FLOW graph. |
| Internal Leakage | 1 drops/min max. at 350bar |
| Cracking Pressure | C=2.0bar A=0.3bar B=1.0bar D=3.5bar E=5.0bar F=7.0bar G=10.5bar |
| Temperature | -40°F to +250°F(-40°C to +120°C) |
| Filtration | See page N-1 |
| Fluids | Mineral-based fluids with viscosities of 7.4 to 420 cSt. |
| Cavity | SUN T-18A,See page M-8 |
| Housing Material | Steel & Ductile iron rated to 350bar |



PRESSURE DROP VS.FLOW



TO ORDER



1 Function
LCX=Check Valve

2 Flow
J=610L/min

3 Control
X=Not-adjustable

4 Cracking Pressure
C=2bar(30psi)
A=0.3bar(4psi)
B=1bar(15psi)
D=3.5bar(50psi)
E=5bar(75psi)
F=7bar(100psi)
G=10.5bar(150psi)

5 Seal Kits
N= Buna N
V= Viton

6 Port Size
Omit=None
16T=SAE16
20T=SAE20
8G=G 1

※Other port sizes are available

D

INSTALLATION DIMENSIONS

Unit=Millimeters

