

LFR-10-3A

Adjustable Pressure-compensated
Flow Control Valve

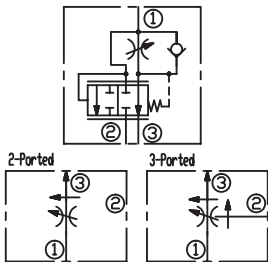
DESCRIPTION

A cartridge-style adjustable pressure-compensated flow control valve

OPERATION

The valve maintains a constant flow rate from ③ regardless of load pressure changes in the system downstream of ③, or in the bypass leg at ②. Reverse flow (③ to ①) bypasses the control orifice. Bypass port ② may be fully pressurized. The regulated flow increases from closed to fully open, with counter-clockwise rotation of the knob.

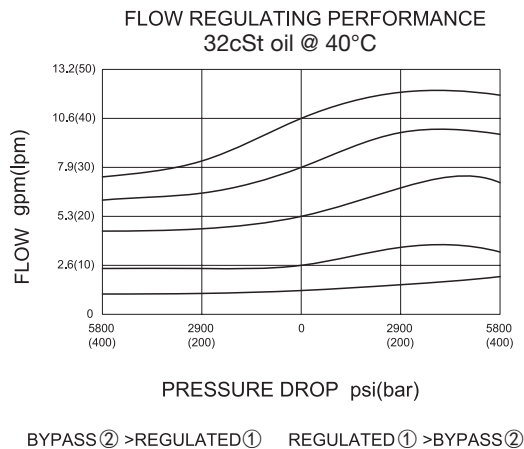
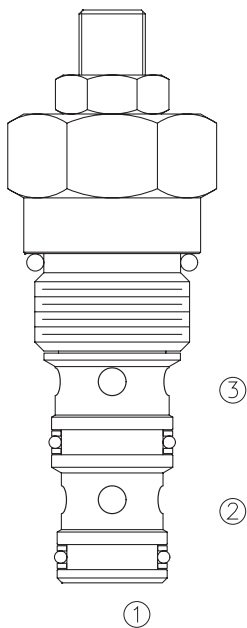
SYMBOL



SPECIFICATIONS

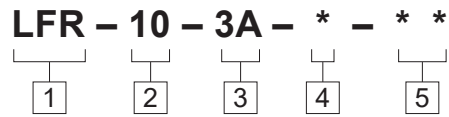
| | |
|--------------------|--|
| Operating Pressure | 420 bar |
| Flow | See PRESSURE DROP VS.FLOW graph. |
| Flow Setting | 3-ported regulated flow: 2-45 lpm 2-ported regulated flow: 2-40 lpm 1-ported inlet flow: 10-90 lpm |
| Temperature | -40°F to +250°F(-40°C to +120°C) |
| Filtration | See page N-1 |
| Fluids | Mineral-based fluids with viscosities of 7.4 to 420 cSt. |
| Cavity | 10-3, See page M-2 |
| Housing Material | Steel & Ductile iron rated to 350bar |

PRESSURE DROP VS.FLOW



If flow to port ③ is shut off,
flow to port ② will be shut off

TO ORDER



1 Function
LFR=Adjustable Pressure-compensated
Flow Control Valve

4 Adjustment
K=Plastic Knob
Omit=5mm Hex Allen Head

5 Port Size
Omit=None
6T=SAE6
8T=SAE8
2G=G 1/4
3G=G 3/8

2 Size
10=10 Size

3 Optional Flow Setting
3A=Adjustable Orifice

※ See page K-5 for detail of housing
※ Other port sizes are available

F

INSTALLATION DIMENSIONS

Unit=Millimeters

