

LRPIC

Smooth-and-quiet Pilot-operated Relief Valve

DESCRIPTION

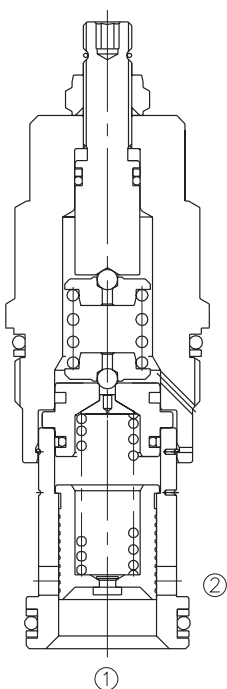
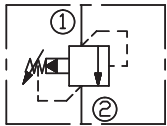
A cartridge-style smooth-and-quiet balanced piston relief valve

OPERATION

The valves are normally closed, pressure-limiting valves used to protect hydraulics components from pressure transients. When the pressure at the inlet (port ①) reaches the valve setting, the valve starts to open to tank (port ②), throttling flow to limit the pressure rise. The valves are accurate, have low pressure rise flow they are smooth and quiet, and are moderately fast.

Back pressure on the tank port ② is directly additive to the valve setting at a 1:1 ratio.

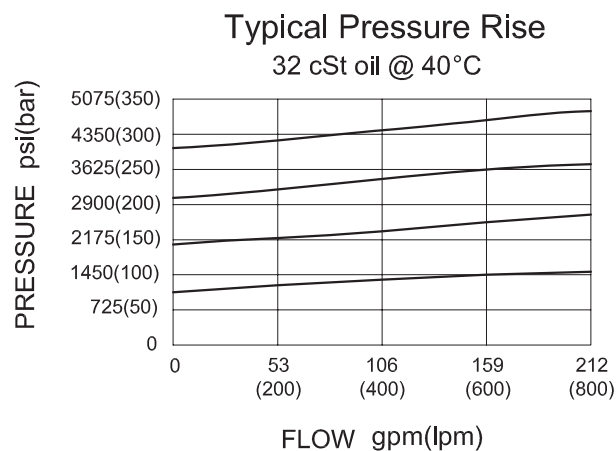
SYMBOL



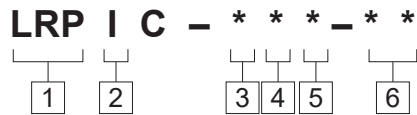
SPECIFICATIONS

Operating Pressure	350bar
Capacity	380 L/min.
Internal Leakage	50 cc/min. at 70 bar
Response Time- Typical	10 ms
Standard Spring Ranges	A 7 to 210 bar, preset:70bar B 3.5 to 105 bar, preset:70bar C 10.5 to 420 bar, preset:70bar D 1.7 to 55 bar, preset:28bar E 1.7 to 28 bar, preset:14bar W 10.5 to 315 bar, preset:70bar N 4 to 55 bar, preset:28bar Q 4 to 28 bar, preset:14bar
Temperature	-40°F to +250°F(-40°C to +120°C)
Filtration	See page N-1
Fluids	Mineral-based fluids with viscosities of 7.4 to 420 cSt.
Cavity	SUN T-16A, See page M-8
Housing Material	Steel & Ductile iron rated to 350bar

PRESSURE DROP VS.FLOW



TO ORDER



- 1 Function**
LRP=Smooth-and-quiet
Pilot-operated Relief Valve

- 2 Capacity**
I=380L/min

- 3 Control**
L=Standard Screw Adjustment

- 4 Spring Ranges**
 A=100-3000psi(7-210bar)
 Preset:1000psi(70bar)
 B=50-1500psi(3.5-105bar)
 Preset:1000psi(70bar)
 C=150-6000psi(10.5-420bar)
 Preset:1000psi(70bar)
 D=25-800psi(1.7-55bar)
 Preset:400psi(28bar)
 E=25-400psi(1.7-28bar)
 Preset:200psi(14bar)
 W=150-4500psi(10.5-315bar)
 Preset:1000psi(70bar)
 N=60-800psi(4-55bar)
 Preset:400psi(28bar)
 Q=60-400psi(4-28bar)
 Preset:200psi(14bar)

- 5 Seal Kits**
N= Buna N
V=Viton

- 6 Port Size**
Omit=None
12T=SAE12
16T=SAE16
6G=G 3/4
8G=G 1

※ See page K-14 for detail of housing
 ※ Other port sizes are available

Factory Pressure setting established at 15L/min.

INSTALLATION DIMENSIONS

Unit=Millimeters

