

LADRV6-10

Direct-acting Relief Valve

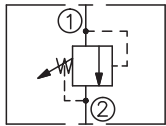
DESCRIPTION

A cartridge-style direct-acting poppet-type relief valve

OPERATION

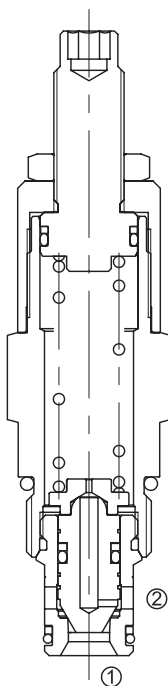
The valve prevents flow from ① to ② until the set Cracking Pressure at ① is achieved. The poppet then unseats allowing flow from ① to ② protecting the circuit from over pressurization.

SYMBOL

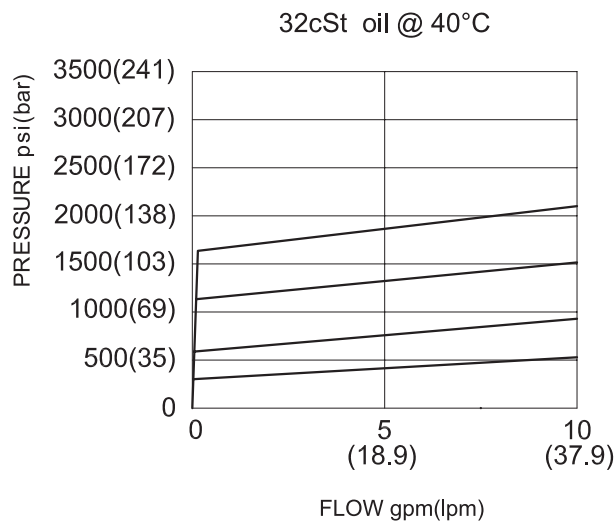


SPECIFICATIONS

Operating Pressure	228bar
Flow	See PRESSURE DROP VS. FLOW graph.
Internal Leakage	5 drops/min max. to 80% of nominal setting
Reseat Pressure	80% of cracking pressure (cracking pressure at 0.95 lpm /0.25 gpm)
Standard Spring Ranges	3.45 to 41.38 bar; preset: 20.7bar
	10.34 to 82.76 bar; preset: 41.4bar
	17.24 to 158.62 bar; preset: 80.0bar
	17.24 to 227.59 bar; preset:113.8bar
Temperature	-40°F to +250°F(-40°C to +120°C)
Filtration	See page N-1
Fluids	Mineral-based fluids with viscosities of 7.4 to 420 cSt.
Cavity	10-2, See page M-2
Housing Material	6061-T6 aluminum alloy rated to 207bar, Steel & Ductile iron rated to 350bar

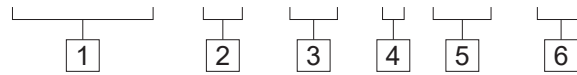


PRESSURE DROP VS.FLOW



TO ORDER

LADRV6 – 10 – * * – * / *** – * ***



1 Function
LADRV6=Direct-acting Relief Valve

2 Size
10=10 Size

3 Spring Ranges
5=58-507psi(4-35bar)
Preset:246psi(17bar)
11=101-1100psi(7-76bar)
Preset:550psi(38bar)
23=246-2300psi(17-159bar)
Preset:1145psi(79bar)
37=246-3770psi(17-260bar)
Preset:1790psi(124bar)

4 Adjustment
K= 1-1/2" Dia Knob
Omit=1/4" Hex Allen Head

5 Optional Pressure Setting
Omit=Standard Setting
Example:0200=200bar

6 Port Size
Omit=None
4T=SAE4
6T=SAE6
2G=G 1/4
3G=G 3/8

※ See page K-1 for detail of housing
※ Other port sizes are available

E

INSTALLATION DIMENSIONS

Unit=Millimeters

