

LCPC-14S

Flow Control Valve

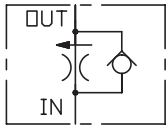
DESCRIPTION

An in-line non-adjustable externally-ported pressure-compensated flow control valve with free reverse

OPERATION

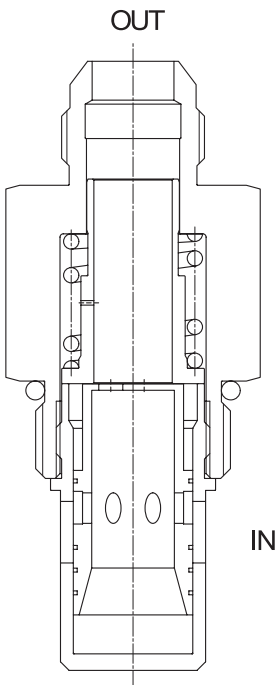
The valve maintains a constant flow within specified accuracies from inlet to outlet regardless of downstream load pressure. When flow produces a minimum predetermined pressure differential across the compensator spool control orifice, the spool shifts against the spring force to throttle the flow and maintain the flow setting. In the reverse direction the spool shifts to permit free flow.

SYMBOL

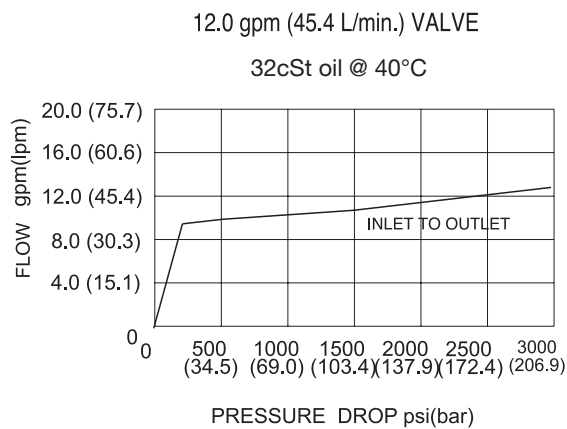


SPECIFICATIONS

Operating Pressure	207bar
Flow Setting	8 gpm (30.3 l/min.) 12 gpm(45.4 l/min.) 17 gpm(64.3 l/min.) 24 gpm(90.8 l/min.)
Flow Maintenance	all valves: +5% -15%
Temperature	-40°F to +250°F(-40°C to +120°C)
Filtration	See page N-1
Fluids	Mineral-based fluids with viscosities of 7.4 to 420 cSt.
Cavity	14S, See page M-16
Housing Material	6061-T6 aluminum alloy rated to 207bar, Steel & Ductile iron rated to 350bar



PRESSURE DROP VS.FLOW



TO ORDER

LCPC - 14S - * * - * *

┌───┐
┌───┐
┌───┐
┌───┐

1
2
3
4

1 Function
 LCPC=In-line Non-adjustable Externally-ported
 Pressure-compensated Flow Control Valve
 With Free Reverse Check

3 Optional Flow Setting
 8=8.00gpm(30.3L/min)
 12=12.00gpm(45.4L/min)
 17=17.00gpm(64.3L/min)
 24=24.00gpm(90.8L/min)

4 Port Size
 Omit=None
 8T=SAE8
 10T=SAE10

2 Size
 14S=14S Size

※Other port sizes are available

F

INSTALLATION DIMENSIONS

Unit=Millimeters

