

LCV-10-B

Check Valve

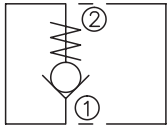
DESCRIPTION

A cartridge-style ball-type check valve

OPERATION

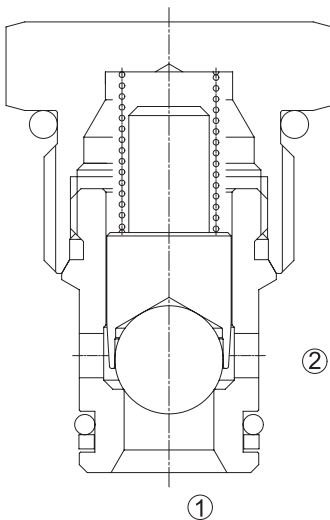
Pressure at ① overcomes the spring-bias ball and allows free flow from ① to ② .
Flow in the opposite direction, from ② to ① ,is blocked by the ball.

SYMBOL

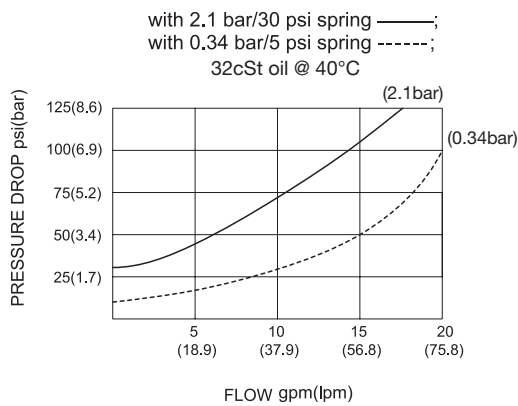


SPECIFICATIONS

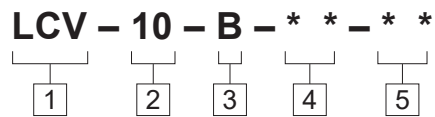
Operating Pressure	250bar
Flow	See PRESSURE DROP VS.FLOW graph.
Internal Leakage	2 drops/min max. at 250bar
Cracking Pressure	0.34=0.34bar 1.0=1.0bar 2.1=2.1bar 2.8=2.8bar 4.8=4.8bar 6.9=6.9bar 13.6=13.6bar 20.4=20.4bar
Temperature	-40°F to +250°F(-40°C to +120°C)
Filtration	See page N-1
Fluids	Mineral-based fluids with viscosities of 7.4 to 420 cSt.
Cavity	10-2,See page M-2
Housing Material	6061-T6 aluminum alloy rated to 207bar, Steel & Ductile iron rated to 350bar



PRESSURE DROP VS.FLOW



TO ORDER



1 Function
LCV=Check Valve

2 Size
10=10 Size

3 Type
B=Ball

4 Cracking Pressure
 0.34=0.34bar
 1.0=1.0bar
 2.1=2.1bar
 2.8=2.8bar
 4.8=4.8bar
 6.9=6.9bar
 13.6=13.6bar
 20.4=20.4bar

5 Port Size
 Omit=None
 6T=SAE6
 8T=SAE8
 3G=G 3/8
 4G=G 1/2

※ See page K-4 for detail of housing
 ※ Other port sizes are available

D

INSTALLATION DIMENSIONS

Unit=Millimeters

